

APP CRS	Rwy Idg	<b>4899</b>
<b>083°</b>	TDZE	<b>634</b>
	Apt Elev	<b>634</b>

# RNAV (GPS) RWY 8

GRIFFITH-MERRILLVILLE (Ø5C)

RNP APCH

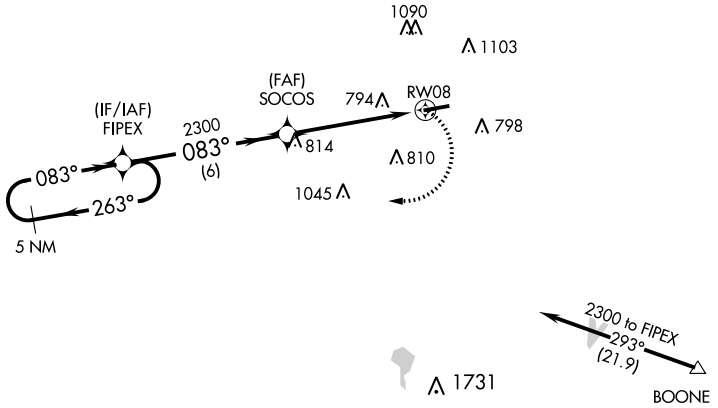
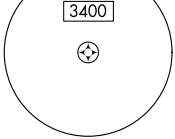
▼ Obtain local altimeter setting on CTAF; when not received use Chicago Midway  
 ▲ NA Init altimeter setting and increase all MDAs 60 feet. Visibility reduction by helicopters NA. Procedure NA at night.

MISSED APPROACH: Climbing right turn to 2300 direct FIPEX and hold.

CHICAGO APP CON  
**133.1 285.6**

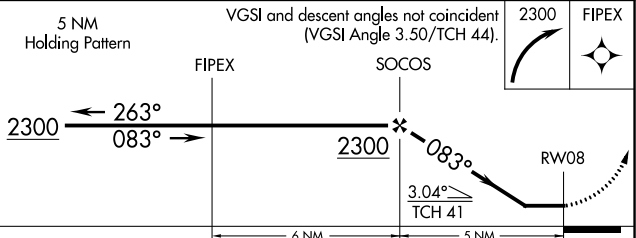
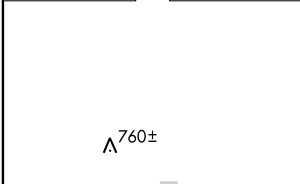
UNICOM  
**123.0 (CTAF) 0**

MSA RW08 25 NM



Procedure NA for arrivals at BOONE via V422 southeastbound.

ELEV **634**      TDZE **634**



REIL Rwy 8 and 26 **0**  
 MIRL Rwy 8-26 **0**

CATEGORY	A	B	C	D
LNVA MDA	1080-1	446 (500-1)	NA	
CIRCLING	1200-1	566 (600-1)	NA	

EC-2, 21 JUN 2018 to 19 JUL 2018

EC-2, 21 JUN 2018 to 19 JUL 2018