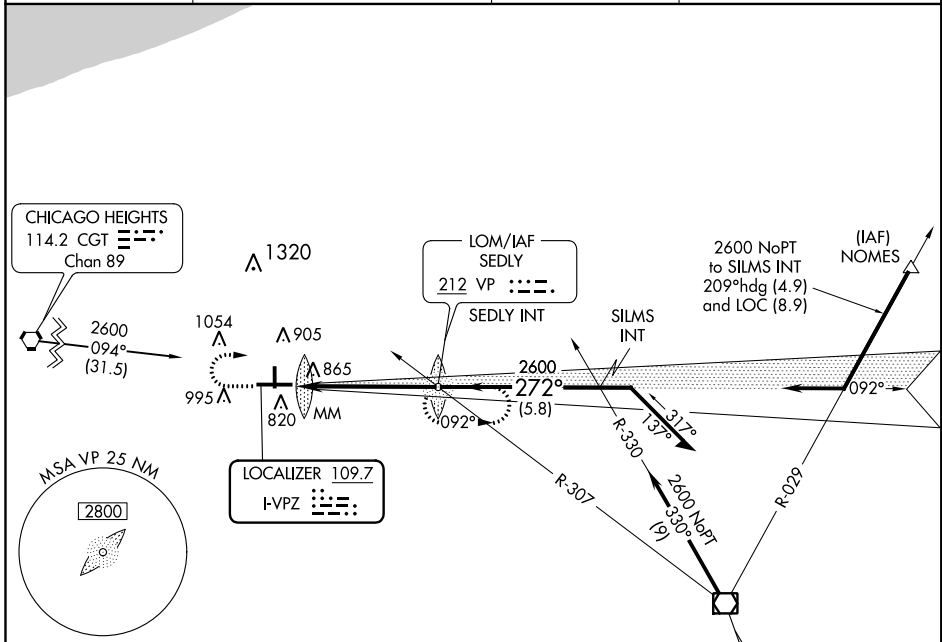


LOC I-VPZ 109.7	APP CRS 272°	Rwy Idg TDZE Apt Elev	6500 770 771
---------------------------	------------------------	-----------------------------	---

ILS RWY 27

PORTER COUNTY RGNL (VPZ)

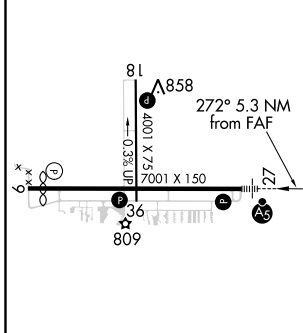
	MALS R	MISSED APPROACH: Climb to 1400, then climbing right turn of 2600 direct SEDLY LOM and hold.	
ASOS 125.875	SOUTH BEND APP CON * 132.05 257.8	CLNC DEL 120.525	UNICOM 122.725 (CTAF)



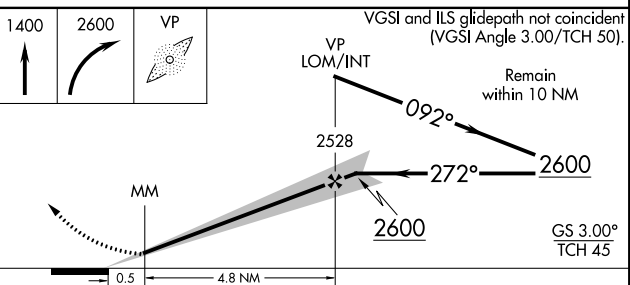
EC-2, 21 JUN 2018 to 19 JUL 2018

EC-2, 21 JUN 2018 to 19 JUL 2018

ELEV 771	D	TDZE 770
----------	---	----------



ADF REQUIRED



HIRL Rwy 9-27

MIRL Rwy 18-36

REIL Rwys 9, 18 and 36

FAF to MAP 5.3 NM

Knots	60	90	120	150	180
Min:Sec	5:18	3:32	2:39	2:07	1:46

CATEGORY	A	B	C	D
S-ILS 27	970-1/2 200 (200-1/2)			
S-LOC 27	1120-1/2 350 (400-1/2)			1120-3/4 350 (400-3/4)
CIRCLING	1260-1 489 (500-1)	1300-1 529 (600-1)	1300-1 1/2 529 (600-1 1/2)	1360-2 589 (600-2)