

RNAV (GPS) Y RWY 30

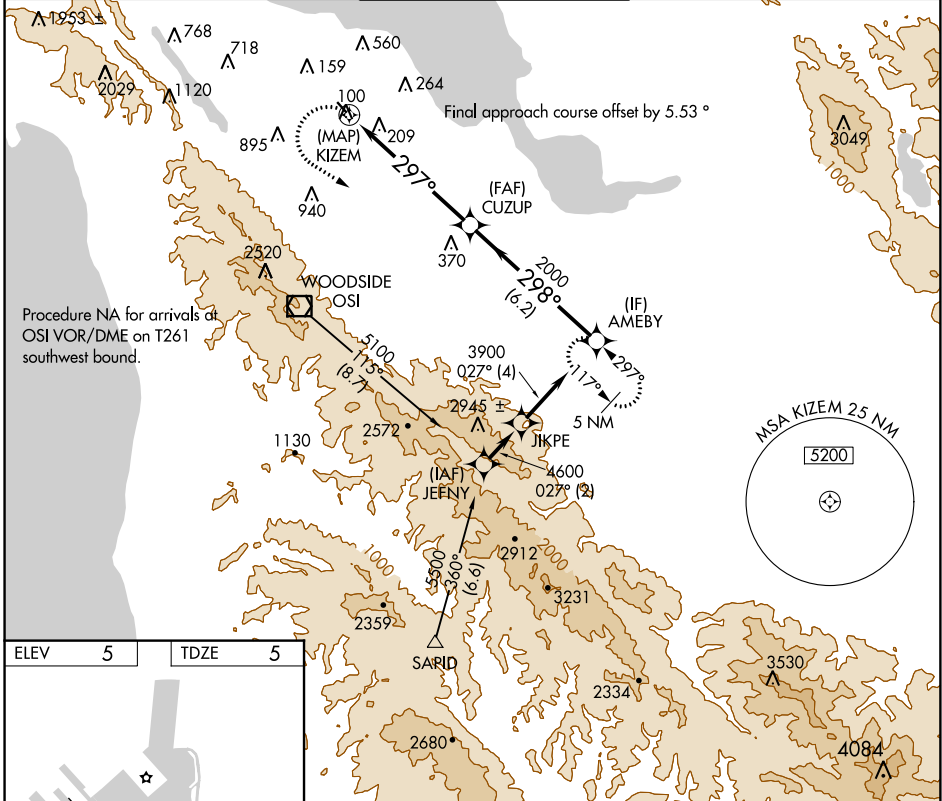
SAN CARLOS (SQL)

APP CRS 297°	Rwy Idg 2600
	TDZE 5
	Apt Elev 5

▼ DME/DME RNP-0.3 NA. When local altimeter setting not received, use San Francisco Intl altimeter setting and increase all MDA 40 feet.
▲ Rwy 30 visibility reduction by helicopters below 1 SM NA. Circling NA west of Rwy 12-30.

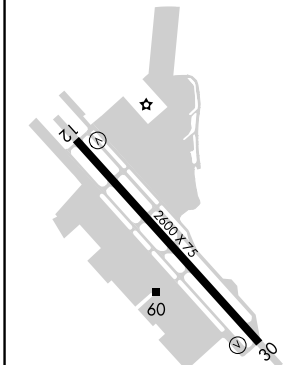
MISSED APPROACH: Climbing left turn to 5400 direct AMEBY and hold, continue climb-in-hold to 5400.

ATIS 125.9	NORCAL APP CON 133.95 317.6	SAN CARLOS TOWER ★ 119.0 (CTAF) 0 326.2	GND CON 121.6	UNICOM 122.95
----------------------	---------------------------------------	---	-------------------------	-------------------------

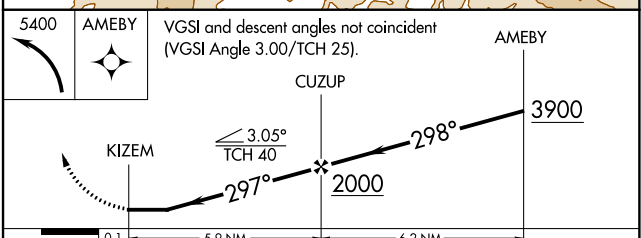


Procedure NA for arrivals at OSI VOR/DME on T261 southwest bound.

ELEV	5	TDZE	5
------	---	------	---



REIL Rwy 12 and 30	1
MIRL Rwy 12-30	1



CATEGORY	A	B	C	D
LNAV MDA	1260-1¼	1255 (1300-1¼)		NA
CIRCLING	1260-1¼ 1255 (1300-1¼)	1260-1½ 1255 (1300-1½)		NA

SW-2, 21 JUN 2018 to 19 JUL 2018

SW-2, 21 JUN 2018 to 19 JUL 2018