

AGUDE FIVE ARRIVAL

AL-263 (FAA)

MINNEAPOLIS-ST PAUL, MINNESOTA

8 14 02 9 U V 16 16 01 8 10 2 T 0 T 6 L ' 1 - O N

NOTE: Chart not to scale.

NOTE: DME and RADAR required.

MINNEAPOLIS APP CON
121.2 335.5
ANOKA COUNTY BLAINE (JANES FIELD) ATIS
120.625
CRYSTAL ATIS
124.475
FLYING CLOUD ATIS
124.9
ST PAUL DOWNTOWN HOLMAN FIELD ATIS
118.35

AGUDE
N45°07.76'-W92°23.52'
VERTICAL NAVIGATION
PLANNING INFORMATION
Turbolojets: Expect 8000
Turboprops: Expect 6000

GOPHER
117.3 GEP
Chan 120
N45°08.74'-W93°22.39'

MARIE LAKE MUNI-BILL
MAVENCAMP SR FLD

WHISK
ANOKA COUNTY-
BLAINE
(JANES FIELD)
N45°08.39'
W92°57.73'

LO SIMENSTAD
MUNI

THATS
N45°06.38'
W91°28.36'
L-14, H-2

ROBBY
N44°04.55'
W89°57.63'

BEERI
N43°46.15'
W89°24.84'

BADGER
116.4 BAE
Chan 111
N43°07.01'-W88°17.06'

MINNEAPOLIS
115.3 MSP
Chan 100

FARMINGTON
115.7 FGT
Chan 104

STILL
N45°08.06'
W92°38.69'

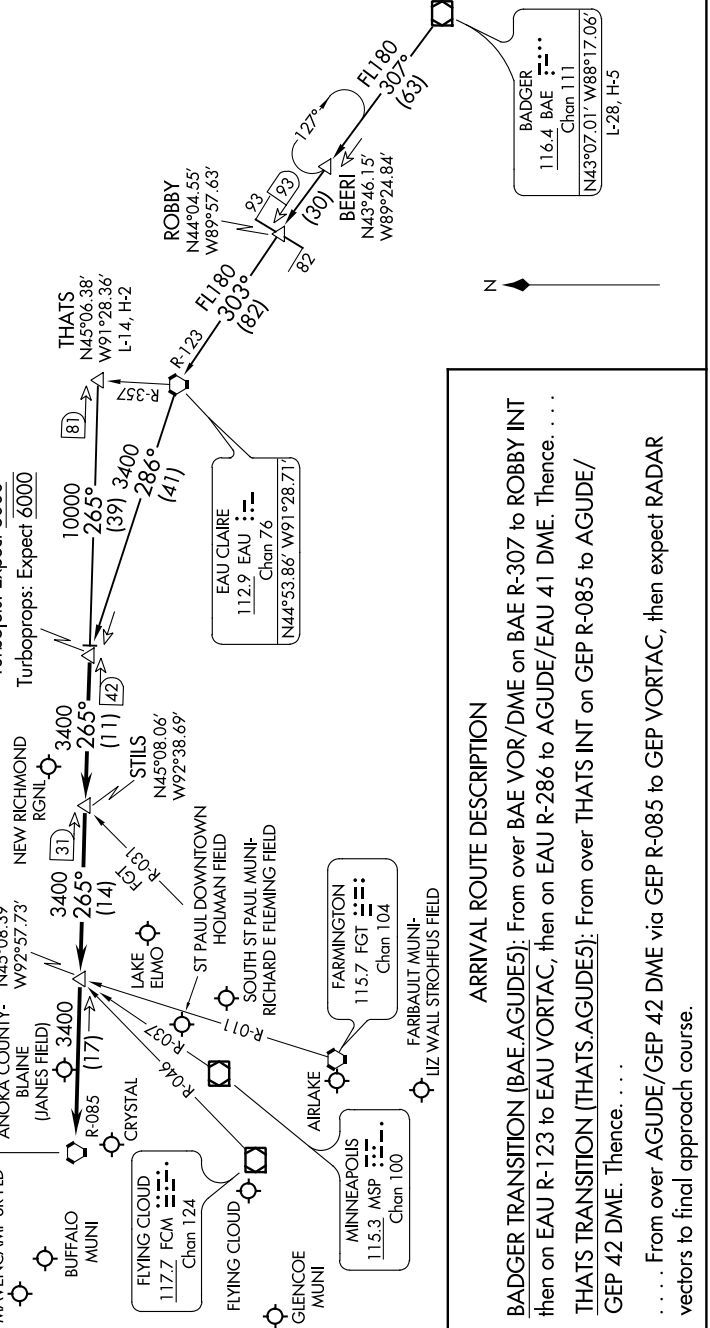
EAU CLAIRE
112.9 EAU
Chan 76
N44°53.86'-W91°28.71'

FLYING CLOUD
117.7 FCM
Chan 124

FLYING CLOUD
124.9

ST PAUL DOWNTOWN
HOLMAN FIELD ATIS
118.35

MINNEAPOLIS APP CON
121.2 335.5



ARRIVAL ROUTE DESCRIPTION

BADGER TRANSITION (BAE.AGUDE5): From over BAE VOR/DME on BAE R-307 to ROBBY INT then on EAU R-123 to EAU VORTAC, then on EAU R-286 to AGUDE/EAU 41 DME. Thence. . . .

THATS TRANSITION (THATS.AGUDE5): From over THATS INT on GEP R-085 to AGUDE/ GEP 42 DME. Thence. . . .

. . . . From over AGUDE/GEP 42 DME via GEP R-085 to GEP VORTAC, then expect RADAR vectors to final approach course.

AGUDE FIVE ARRIVAL

MINNEAPOLIS-ST PAUL, MINNESOTA