

WAAS CH <b>45824</b> <b>W25A</b>	APP CRS <b>246°</b>	Rwy Idg TDZE <b>543</b> Apt Elev <b>543</b>	<b>3375</b>
--	------------------------	---	-------------

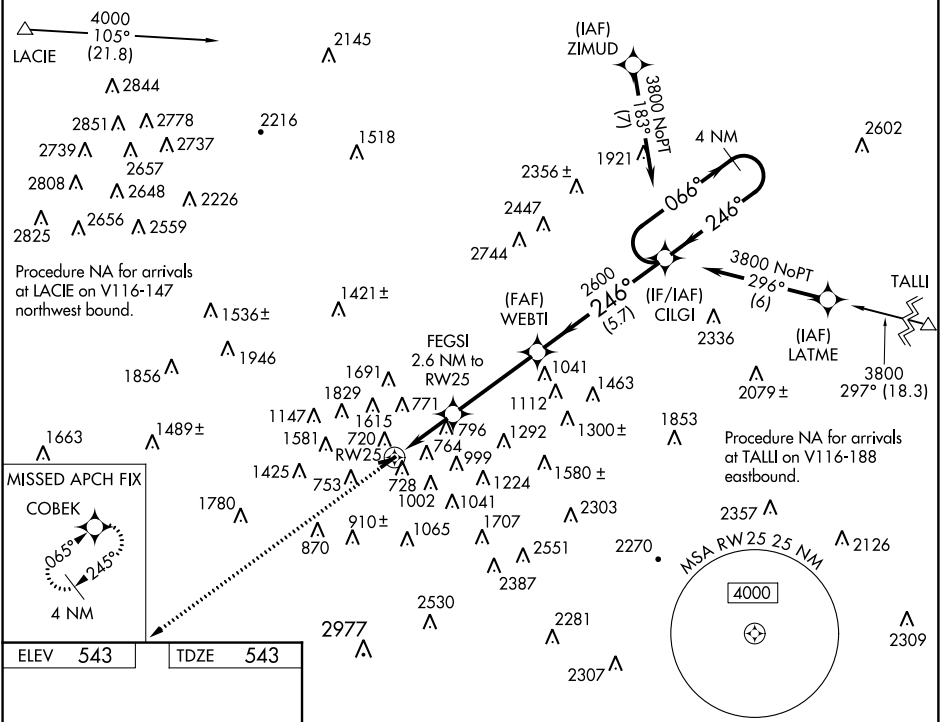
# RNAV (GPS) RWY 25

WILKES-BARRE WYOMING VALLEY (WBW)

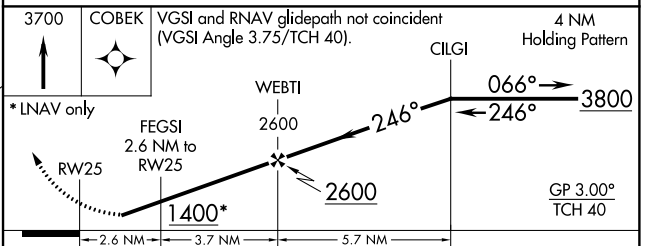
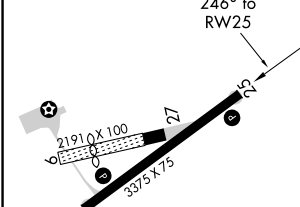
**NA** Baro-VNAV NA. Use Wilkes-Barre/Scranton altimeter setting. DME/DME RNP-0.3 NA. Circling Rwy 7 NA at night. Circling NA NW of Rwy 7-25. Helicopter visibility reduction below 3/4 SM NA.

**MISSED APPROACH:**  
Climb to 3700 direct COBEK and hold.

WILKES-BARRE/SCRANTON ATIS <b>111.6</b>	WILKES-BARRE APP CON <b>126.3 256.7</b>	UNICOM <b>122.8 (CTAF) 0</b>
--	--	---------------------------------



ELEV <b>543</b>	TDZE <b>543</b>
-----------------	-----------------



CATEGORY	A	B	C	D
LPV DA	981-1½	438 (500-1½)		NA
RNAV/ VNAV DA	1184-2¼	641 (700-2¼)		NA
RNAV MDA	1240-1	697 (700-1)		NA
CIRCLING	1280-1 737 (800-1)	1380-1¼ 837 (900-1¼)		NA

NE-4, 19 JUL 2018 to 16 AUG 2018

NE-4, 19 JUL 2018 to 16 AUG 2018