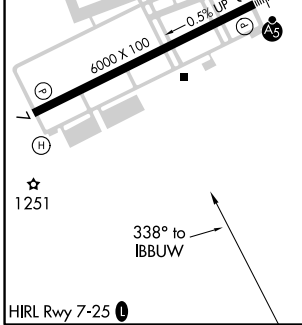
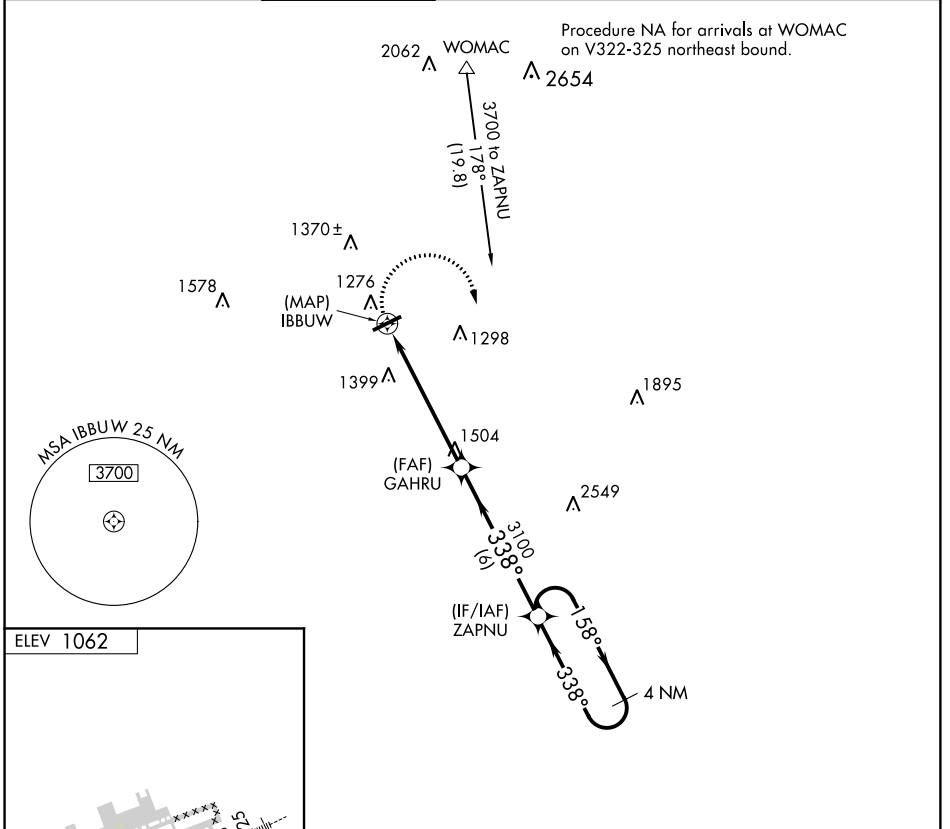


APP CRS 338°	Rwy Idg TDZE Apt Elev	N/A N/A 1062
------------------------	-----------------------------	---

RNAV (GPS)-A

GWINNETT COUNTY-BRISCOE FIELD (LZU)

<p>⚠ DME/DME RNP-0.3 NA. When local altimeter setting not received, use Winder altimeter setting and increase all MDAs 60 feet; increase Cat C and D visibility ¼ mile.</p>				<p>MISSED APPROACH: Climbing right turn to 3600 direct ZAPNU and hold.</p>		
ATIS 132.275	ATLANTA APP CON 126.975 239.275	GWINNETT TOWER ★ 124.1 (CTAF) 0	GND CON 121.8	CLNC DEL 121.8	ATLANTA CLNC DEL 134.0 (When tower closed)	UNICOM 123.05



3600	ZAPNU	4 NM Holding Pattern		
CATEGORY	A	B	C	D
CIRCLING	1640-1	578 (600-1)	1640-1½ 578 (600-1½)	1700-2 638 (700-2)

SE-4, 19 JUL 2018 to 16 AUG 2018

SE-4, 19 JUL 2018 to 16 AUG 2018