

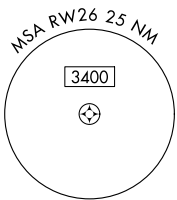
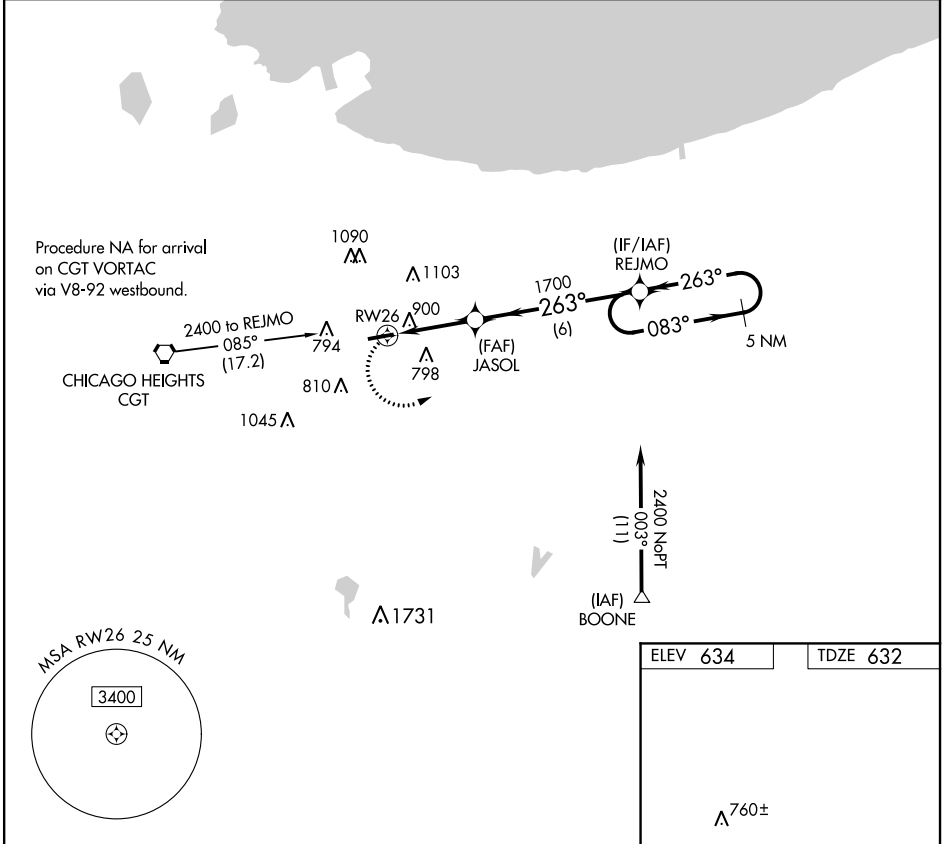
APP CRS 263°	Rwy Idg 3779
	TDZE 632
	Apt Elev 634

RNAV (GPS) RWY 26

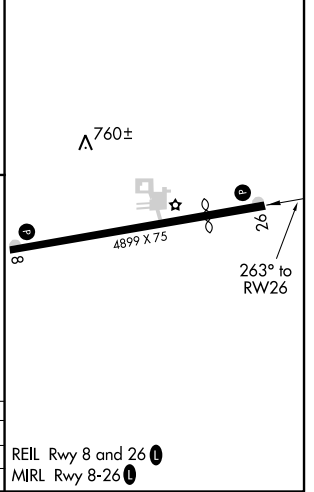
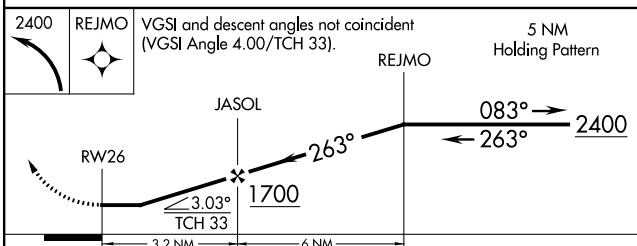
GRIFFITH-MERRILLVILLE (Ø5C)

RNP APCH ▼ NA	Obtain local altimeter setting on CTAF; when not received use Chicago Midway Initial altimeter setting and increase all MDAs 60 feet. Visibility reduction by helicopters NA. Procedure NA at night.	MISSED APPROACH: Climbing left turn to 2400 direct REJMO and hold.
---------------------	--	--

CHICAGO APP CON 133.1 285.6	UNICOM 123.0 (CTAF)
---------------------------------------	-------------------------------



ELEV 634	TDZE 632
----------	----------



CATEGORY	A	B	C	D
LNAV MDA	1160-1	528 (600-1)		NA
CIRCLING	1200-1	566 (600-1)		NA

EC-2, 19 JUL 2018 to 16 AUG 2018

EC-2, 19 JUL 2018 to 16 AUG 2018