

APP CRS	Rwy Idg	<b>4899</b>
<b>083°</b>	TDZE	<b>634</b>
	Apt Elev	<b>634</b>

# RNAV (GPS) RWY 8

GRIFFITH-MERRILLVILLE (Ø5C)

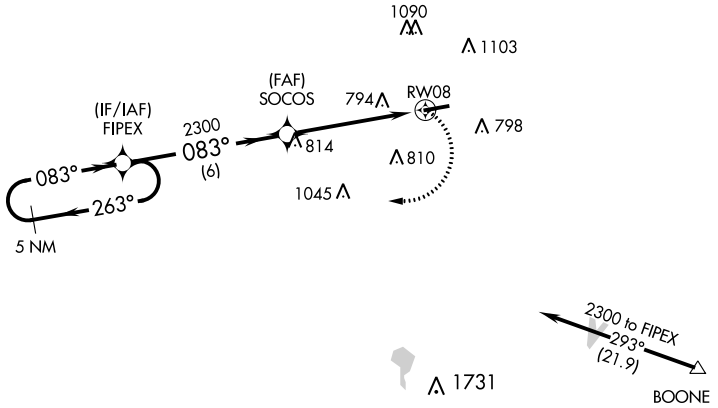
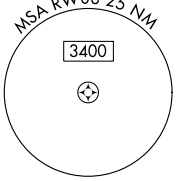
RNP APCH.

▼ Obtain local altimeter setting on CTAF; when not received use Chicago Midway  
 ▲ NA Init altimeter setting and increase all MDAs 60 feet. Visibility reduction by helicopters NA. Procedure NA at night.

MISSED APPROACH: Climbing right turn to 2300 direct FIPEX and hold.

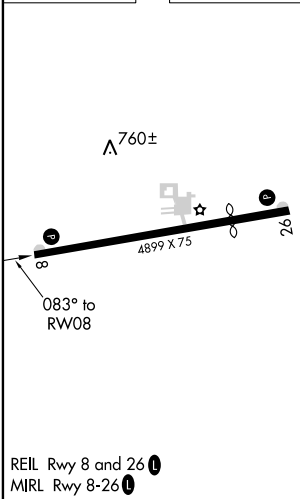
CHICAGO APP CON  
**133.1 285.6**

UNICOM  
**123.0 (CTAF) 0**



Procedure NA for arrivals at BOONE via V422 southeastbound.

ELEV 634 TDZE 634



REIL Rwy 8 and 26  
 MIRL Rwy 8-26

5 NM Holding Pattern	VGSi and descent angles not coincident (VGSi Angle 3.50/TCH 44).		2300	FIPEX
	FIPEX	SOCOS		
2300 ← 263°	083° →	2300	083°	RW08
		3.04° TCH 41		
	6 NM	5 NM		
CATEGORY	A	B	C	D
RNAV MDA	1080-1	446 (500-1)		NA
CIRCLING	1200-1	566 (600-1)		NA

EC-2, 19 JUL 2018 to 16 AUG 2018

EC-2, 19 JUL 2018 to 16 AUG 2018