

AL-5369 (FAA)

ILS or LOC RWY 5

SHENANDOAH VALLEY RGNL (SHD)

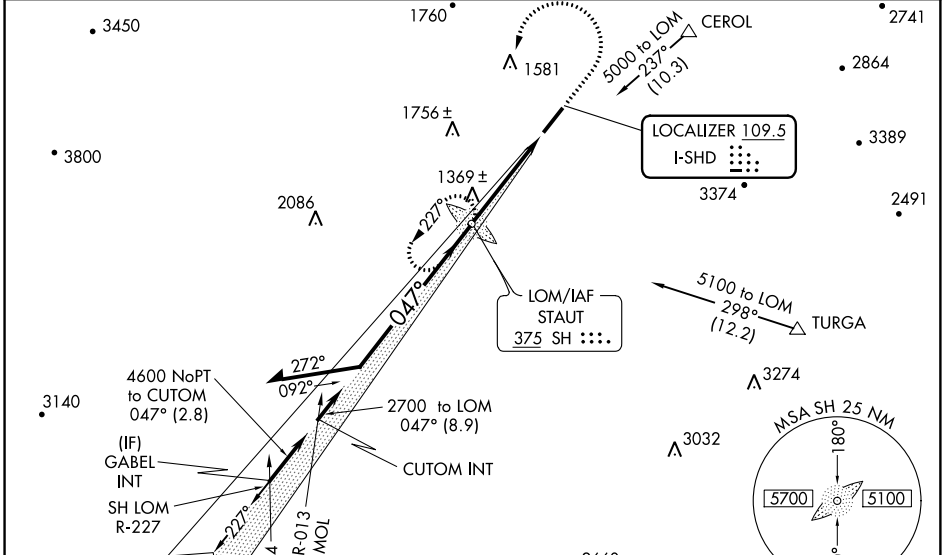
LOC I-SHD 109.5	APP CRS 047°	Rwy Idg 6002	TDZE 1184
		Apt Elev 1201	

ADF Required. Autopilot coupled approach NA below 1494 feet. When local altimeter setting not received, use Charlottesville altimeter setting and increase all DA 130 feet, all MDA 140 feet. Increase ILS visibility ¼ mile all Cats, LOC visibility Cat C/D ¼ mile and Circling Cat D ½ mile. For inoperative MALSRS when using Charlottesville altimeter setting, increase ILS visibility to 1¼ miles.

MALSRS

MISSED APPROACH: Climb to 2600 then climbing left turn to 3600 direct SH LOM and hold.

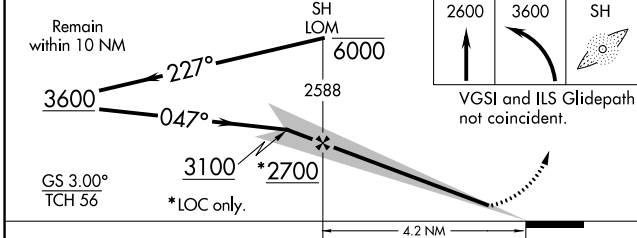
AWOS-3 124.925	POTOMAC APP CON 132.85 323.125	CLNC DEL 118.35	UNICOM 123.0 (CTAF)
--------------------------	--	---------------------------	-------------------------------



ALTERNATE MISSED APCH FIX

MONTEBELLO
MOL 115.3 Chan 100

R-271 -091°



ELEV 1201 TDZE 1184

REIL Rwy 23 1229

HIRL Rwy 5-23

0.4% UP

1233

1246

6002 X 150

047° 4.2 NM from FAF

FAF to MAP 4.2 NM					
Knots	60	90	120	150	180
Min:Sec	4:12	2:48	2:06	1:41	1:24

CATEGORY	A	B	C	D
S-ILS 5		1384-½	200 (200-½)	
S-LOC 5	1620-½	436 (500-½)	1620-¾ 436 (500-¾)	1620-1 436 (500-1)
CIRCLING	1620-1 419 (500-1)	1660-1 459 (500-1)	1660-1½ 459 (500-1½)	1820-2 619 (700-2)

NE-3, 11 OCT 2018 to 08 NOV 2018

NE-3, 11 OCT 2018 to 08 NOV 2018