

LOM SH <b>375</b>	APP CRS <b>047°</b>	Rwy Idg 6002	TDZE 1184
		Apt Elev 1201	

AL-5369 (FAA)

# NDB RWY 5

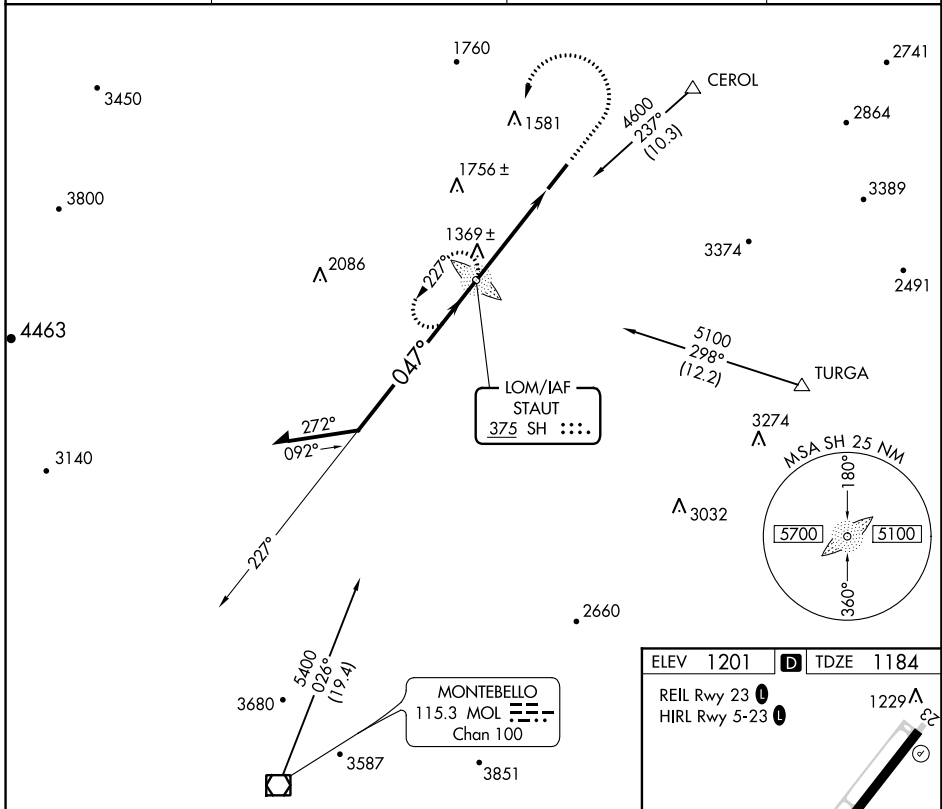
SHENANDOAH VALLEY RGNL (SHD)

**⚠** When local altimeter setting not received, use Charlottesville altimeter setting: increase all MDAs 140 feet and visibility S-5 and Circling Cat C/D ½ mile.



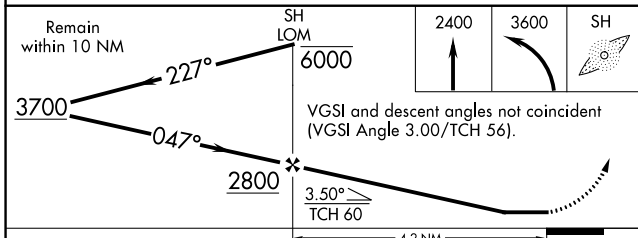
**MISSED APPROACH:** Climb to 2400 then climbing left turn to 3600 direct SH LOM and hold.

AWOS-3 <b>124.925</b>	POTOMAC APP CON <b>132.85 323.125</b>	CLNC DEL <b>118.35</b>	UNICOM <b>123.0 (CTAF) 0</b>
--------------------------	--	---------------------------	---------------------------------



NE-3, 11 OCT 2018 to 08 NOV 2018

NE-3, 11 OCT 2018 to 08 NOV 2018



ELEV 1201	TDZE 1184
REIL Rwy 23	1229
HIRL Rwy 5-23	

FAF to MAP 4.2 NM

Knots	60	90	120	150	180
Min:Sec	4:12	2:48	2:06	1:41	1:24

CATEGORY	A	B	C	D
S-5	1760-¾ 576 (600-¾)		1760-1 576 (600-1)	1760-1½ 576 (600-1½)
CIRCLING	1760-1 559 (600-1)		1760-1½ 559 (600-1½)	1820-2 619 (700-2)