

AL-5369 (FAA)

RNAV (GPS) RWY 23

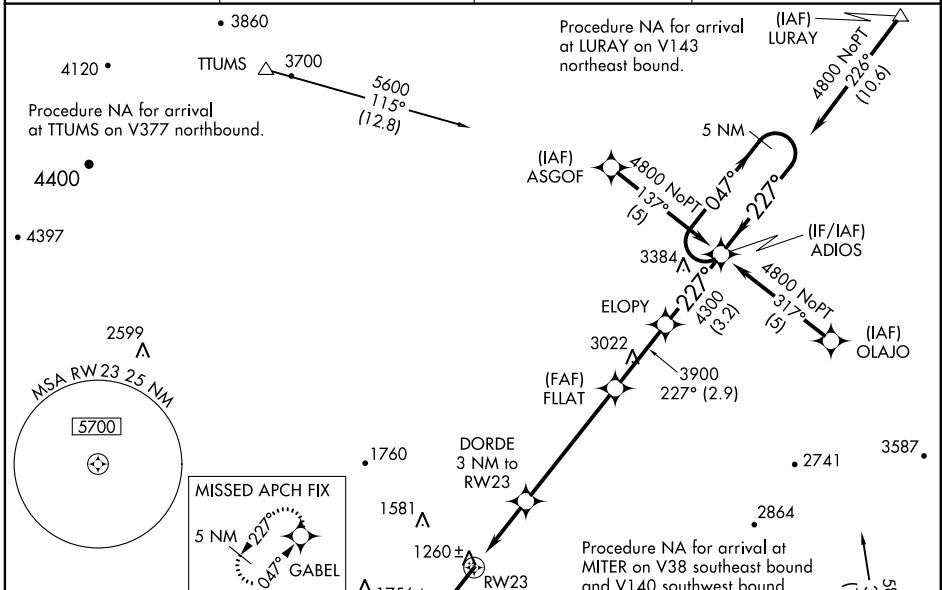
SHENANDOAH VALLEY RGNL (SHD)

WAAS CH 78113 W23A	APP CRS 227°	Rwy Idg TDZE Apt Elev	6002 1201 1201
--	------------------------	-----------------------------	---

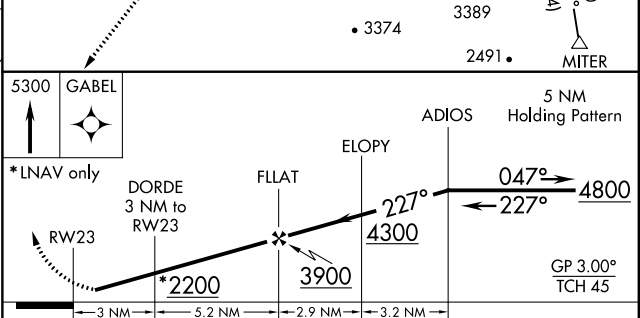
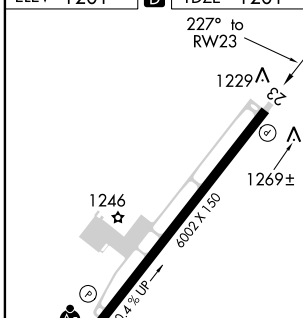
Baro-VNAV NA when using Charlottesville altimeter setting.
 For uncompensated Baro-VNAV systems, LNAV/VNAV NA below 17°C (2°F) or above 47°C (116°F). DME/DME RNP-0.3 NA. Visibility reduction by helicopters NA. When local altimeter setting not received, use Charlottesville altimeter setting and increase all DA 130 feet, all MDA 140 feet. Increase LPV and LNAV/VNAV all Cats visibility ¼ mile, LNAV Cat C visibility ¼ mile and LNAV Cat D and Circling Cat D visibility ½ mile.

MISSED APPROACH: Climb to 5300 direct GABEL and hold, continue climb-in-hold to 5300.

AWOS-3 124.925	POTOMAC APP CON 132.85 323.125	CLNC DEL 118.35	UNICOM 123.0 (CTAF) 0
--------------------------	--	---------------------------	---------------------------------



ELEV 1201	D	TDZE 1201
-----------	----------	-----------



CATEGORY	A	B	C	D
LPV DA		1451-1	250 (300-1)	
LNAV/VNAV DA		1530-1¼	329 (400-1¼)	
LNAV MDA		1520-1	319 (400-1)	
CIRCLING	1600-1	1660-1	1660-1½	1820-2
	399 (400-1)	459 (500-1)	459 (500-1½)	619 (700-2)

NE-3, 11 OCT 2018 to 08 NOV 2018

NE-3, 11 OCT 2018 to 08 NOV 2018