

APP CRS	Rwy Idg	3779
263°	TDZE	632
	Apt Elev	634

RNAV (GPS) RWY 26

GRIFFITH-MERRILLVILLE (Ø5C)

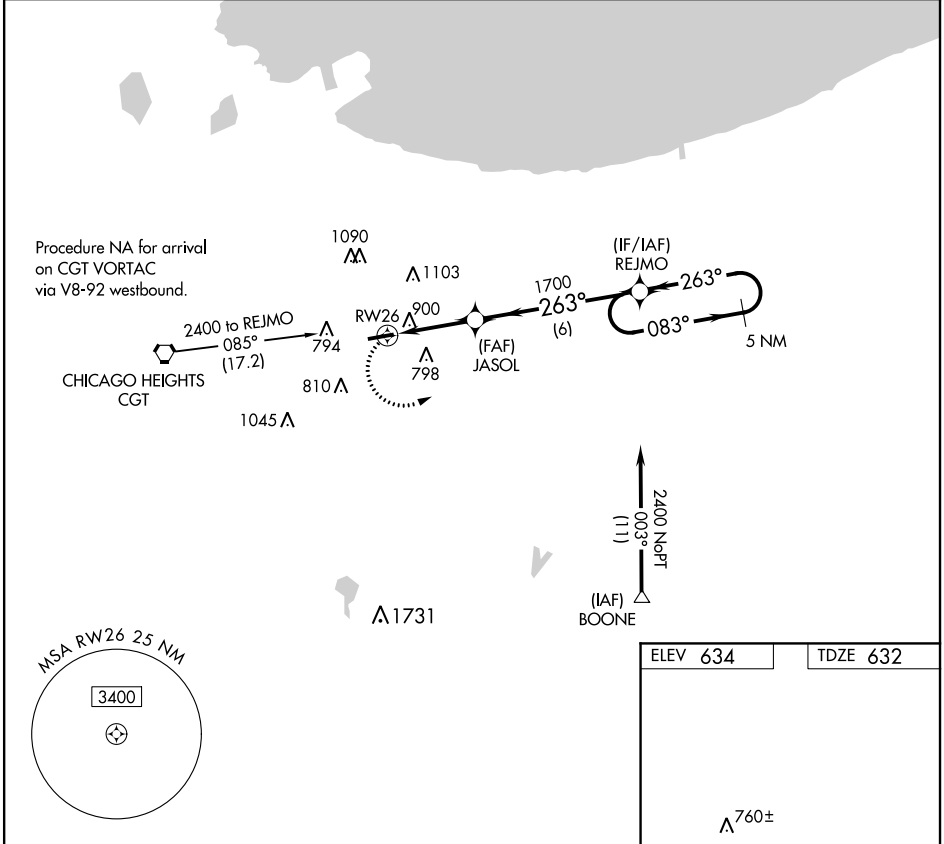
RNP APCH

Obtain local altimeter setting on CTAF; when not received use Chicago Midway
 Init altimeter setting and increase all MDAs 60 feet. Visibility reduction by
 helicopters NA. Procedure NA at night.

MISSED APPROACH: Climbing left
 turn to 2400 direct REJMO and hold.

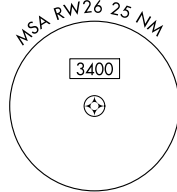
CHICAGO APP CON
133.1 285.6

UNICOM
123.0 (CTAF)

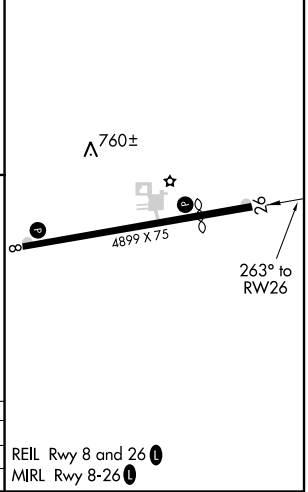
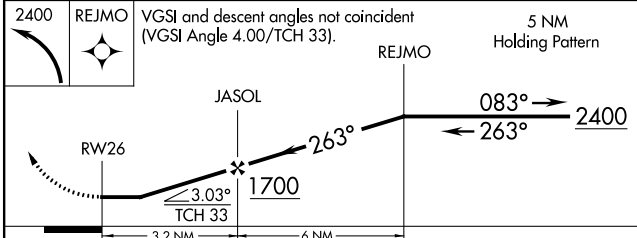


EC-2, 11 OCT 2018 to 08 NOV 2018

EC-2, 11 OCT 2018 to 08 NOV 2018



ELEV 634	TDZE 632
----------	----------



CATEGORY	A	B	C	D
LNAV MDA	1160-1	528 (600-1)		NA
CIRCLING	1200-1	566 (600-1)		NA

REIL Rwy 8 and 26
 MIRL Rwy 8-26