

APP CRS	Rwy Idg	4899
083°	TDZE	634
	Apt Elev	634

RNAV (GPS) RWY 8

GRIFFITH-MERRILLVILLE (Ø5C)

RNP APCH.

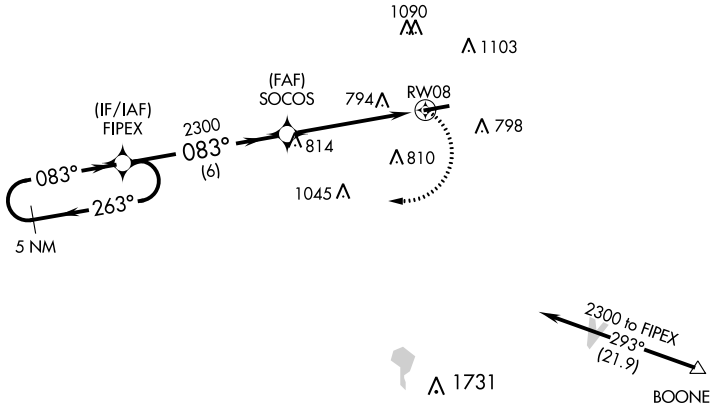
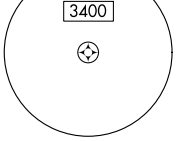
▼ Obtain local altimeter setting on CTAF; when not received use Chicago Midway
 ▲ NA Init altimeter setting and increase all MDAs 60 feet. Visibility reduction by helicopters NA. Procedure NA at night.

MISSED APPROACH: Climbing right turn to 2300 direct FIPEX and hold.

CHICAGO APP CON
133.1 285.6

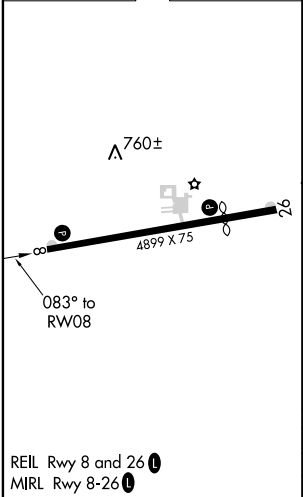
UNICOM
123.0 (CTAF) 0

MSA RW08 25 NM



Procedure NA for arrivals at BOONE via V422 southeastbound.

ELEV 634	TDZE 634
----------	----------



REIL Rwy 8 and 26
 MIRL Rwy 8-26

5 NM Holding Pattern	VGSi and descent angles not coincident (VGSi Angle 3.50/TCH 44).		2300	FIPEX
	FIPEX	SOCOS	RWY 08	
2300	263°	083°	2300	083°
			3.04°	TCH 41
		6 NM		5 NM
CATEGORY	A	B	C	D
LNVA MDA	1080-1	446 (500-1)		NA
CIRCLING	1200-1	566 (600-1)		NA

EC-2, 11 OCT 2018 to 08 NOV 2018

EC-2, 11 OCT 2018 to 08 NOV 2018