

(HLNDS.BUKHD1) 18256

AL-469 (FAA)

BUKHD ONE ARRIVAL (RNAV)

ATLANTA, GEORGIA

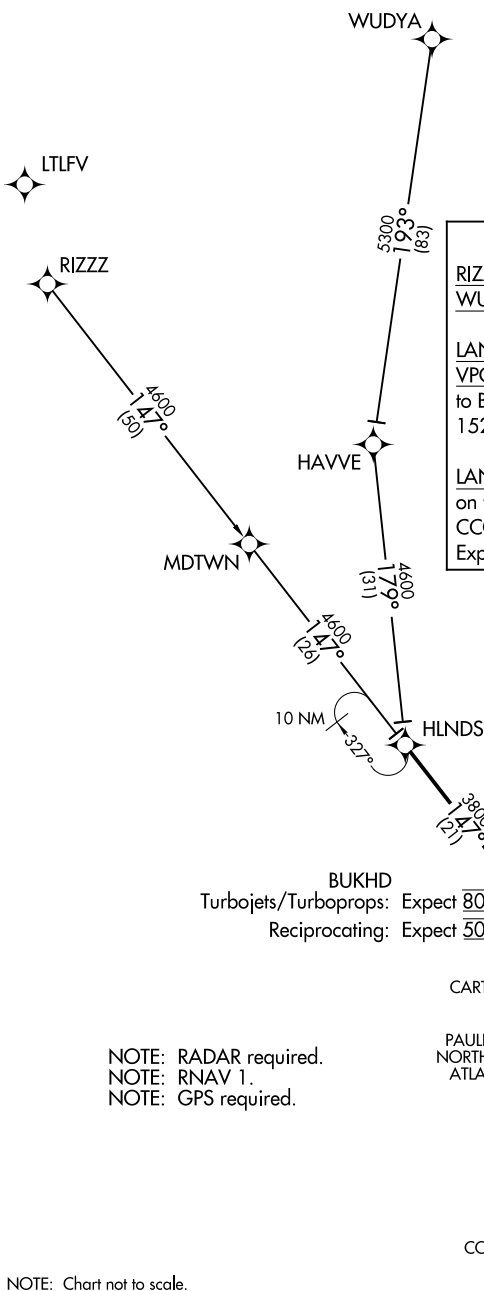
- DEKALB-PEACHTREE ATIS 128.4
- FULTON COUNTY AIRPORT-BROWN FIELD ATIS 120.175
- DOBBINS ARB ATIS ★ 269.5
- COBB COUNTY INTL-MC COLLUM FIELD ATIS 128.125
- GWINNETT COUNTY-BRISCOE FIELD ATIS 132.275
- ATLANTA APP CON 121.0 268.7

ARRIVAL ROUTE DESCRIPTION

RIZZZ TRANSITION (RIZZZ.BUKHD1)
WUDYA TRANSITION (WUDYA.BUKHD1)

LANDING HMP/FFC/RYY/FTY/6A2/CCO/VPC/PUJ/MGE: From HLNDS on track 147° to BUKHD, then on track 152° to DRINC, then on track 152°. Expect RADAR vectors to final approach course.

LANDING PDK/D73/LZU/CVC: From HLNDS on track 147° to BUKHD, then on track 112° to CCOKE, then on track 112°. Expect RADAR vectors to final approach course.



NOTE: RADAR required.
 NOTE: RNAV 1.
 NOTE: GPS required.

NOTE: Chart not to scale.

BUKHD ONE ARRIVAL (RNAV)

(HLNDS.BUKHD1) 15SEP16

ATLANTA, GEORGIA

SE-4, 08 NOV 2018 to 06 DEC 2018

SE-4, 08 NOV 2018 to 06 DEC 2018