

WAAS CH 65631 W13A	APP CRS 132°	Rwy Idg 4498 TDZE 2130 Apt Elev 2131
--	------------------------	---

RNAV (GPS) RWY 13

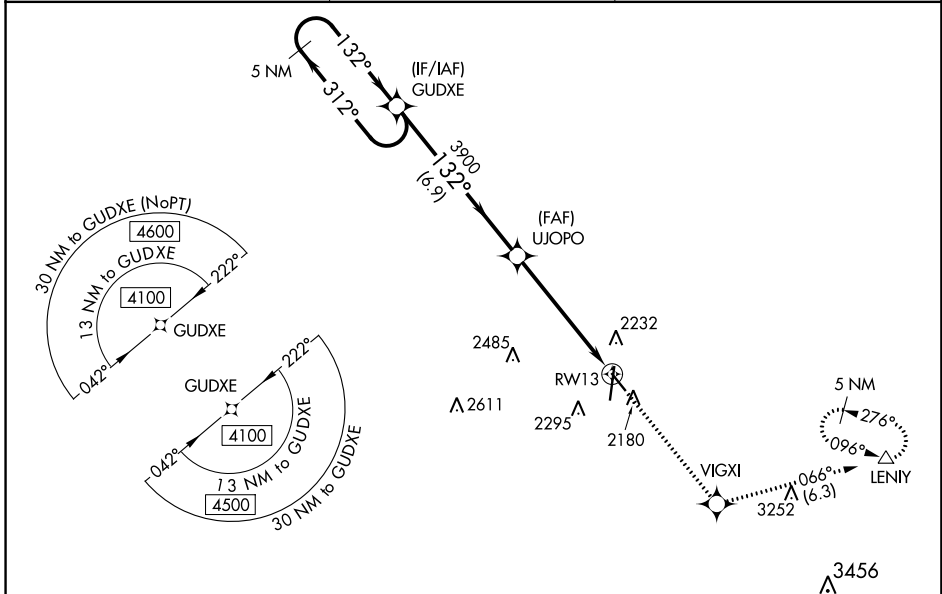
KEARNEY RGNL (E.A.R.)

RNP APCH.

▼ For uncompensated Baro-VNAV systems, LNAV/VNAV NA below -19°C (-2°F) or above 54°C (130°F). When local altimeter setting not received, use Holdrege altimeter setting: increase LPV DA to 2407 feet and all Cats visibility 1/8 SM; increase LNAV/VNAV DA to 2457 feet and all Cats visibility 3/8 SM and all MDAs 80 feet; increase visibility LNAV and Circling Cat C 1/8 SM.

MISSED APPROACH: Climb to 4300 direct VIGXI and on track 066° to LENIY and hold.

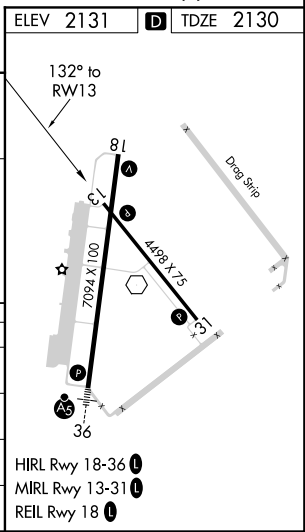
AWOS-3PT 123.875	MINNEAPOLIS CENTER 119.4 278.8	UNICOM 123.0 (CTAF)
----------------------------	--	-------------------------------



VGSI and RNAV glidepath not coincident.

5 NM Holding Pattern	GUDXE	UJOPO	VIGXI	LENIY
4100 ← 312°	→ 132°	3900	↑ 4300	tr 066°
GP 3.00° TCH 43			*1.7 NM to RWY13	*LNAV only
			RWY13	
	6.9 NM	3.7 NM	1.7 NM	

CATEGORY	A	B	C	D
LPV DA	2330-3/4	200 (200-3/4)		NA
LNAV/VNAV DA	2380-3/4	250 (300-3/4)		NA
LNAV MDA	2720-1	590 (600-1)	2720-1 3/4 590 (600-1 3/4)	NA
CIRCLING	2720-1	589 (600-1)	2720-1 3/4 589 (600-1 3/4)	NA



NC-2, 08 NOV 2018 to 06 DEC 2018

NC-2, 08 NOV 2018 to 06 DEC 2018