

APP CRS 083°	Rwy Idg 4899 TDZE 634 Apt Elev 634
------------------------	---

RNAV (GPS) RWY 8

GRIFFITH-MERRILLVILLE (Ø5C)

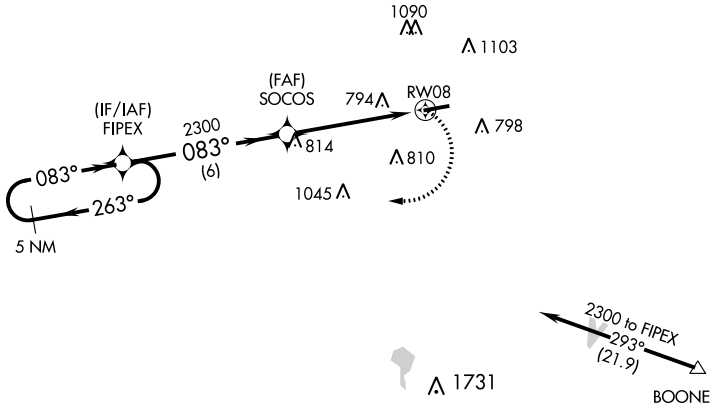
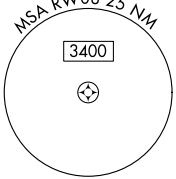
RNP APCH

▼ Obtain local altimeter setting on CTAF; when not received use Chicago Midway
 ▲ NA Init altimeter setting and increase all MDAs 60 feet. Visibility reduction by helicopters NA. Procedure NA at night.

MISSED APPROACH: Climbing right turn to 2300 direct FIPEX and hold.

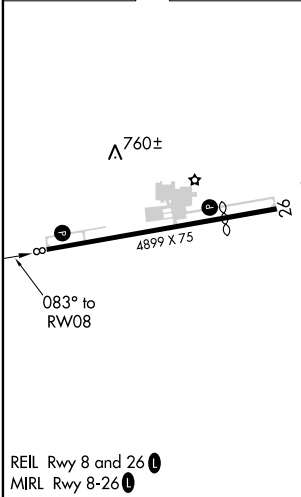
CHICAGO APP CON
133.1 285.6

UNICOM
123.0 (CTAF) 1



Procedure NA for arrivals at BOONE via V422 southeastbound.

ELEV 634	TDZE 634
----------	----------



REIL Rwy 8 and 26 1
MIRL Rwy 8-26 1

5 NM Holding Pattern	VGSi and descent angles not coincident (VGSi Angle 3.50/TCH 44).		2300	FIPEX
	FIPEX	SOCOS	RW08	
2300	263°	083°	2300	083°
			3.04° TCH 41	
		6 NM	5 NM	
CATEGORY	A	B	C	D
LNVA MDA	1080-1	446 (500-1)		NA
CIRCLING	1200-1	566 (600-1)		NA

EC-2, 08 NOV 2018 to 06 DEC 2018

EC-2, 08 NOV 2018 to 06 DEC 2018