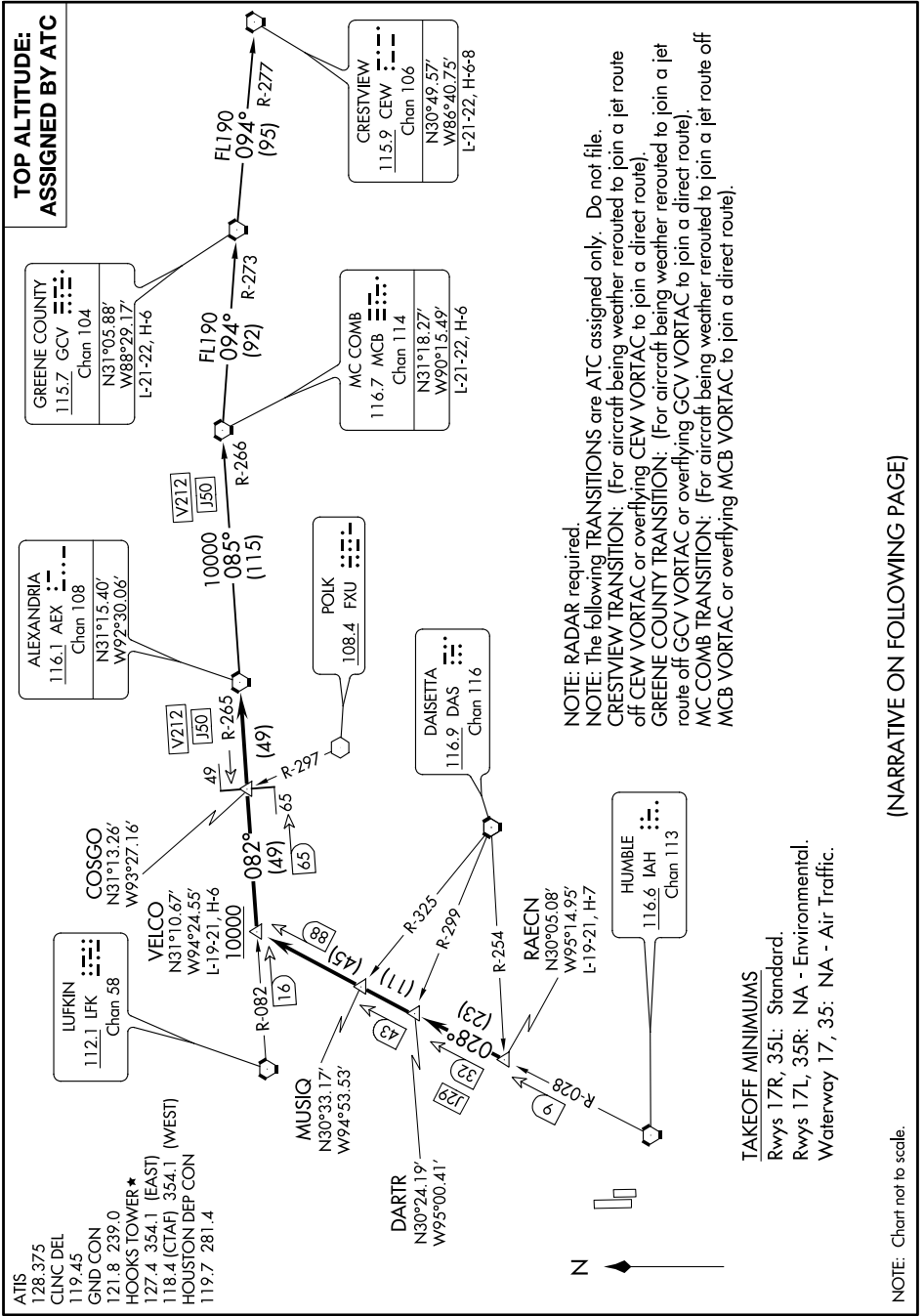


ALEXANDRIA ONE DEPARTURE

SC-5, 08 NOV 2018 to 06 DEC 2018



**TOP ALTITUDE:
ASSIGNED BY ATC**

ALEXANDRIA
116.1 AEX
Chan 108
N31°15.40'
W92°30.06'

GREENE COUNTY
115.7 GCV
Chan 104
N31°05.88'
W88°29.17'
L-21-22, H-6

MC COMB
116.7 MCB
Chan 114
N31°18.27'
W90°15.49'
L-21-22, H-6

CRESTVIEW
115.9 CEW
Chan 106
N30°49.57'
W86°40.75'
L-21-22, H-6-8

LUFKIN
112.1 LFK
Chan 58
N31°13.26'
W93°27.16'

VELCO
N31°10.67'
W94°24.55'
L-19-21, H-6
10000

COSGO
N31°13.26'
W93°27.16'

MUSIQ
N30°33.17'
W94°53.53'

DART
N30°24.19'
W95°00.41'

DAISETTA
116.9 DAS
Chan 116
N31°18.27'
W90°15.49'

RAECN
N30°05.08'
W95°14.95'
L-19-21, H-7

HUMBIE
116.6 IAH
Chan 113

POLK
108.4 FXU
Chan 110
N31°18.27'
W90°15.49'

DAISETTA
116.9 DAS
Chan 116
N31°18.27'
W90°15.49'

RAECN
N30°05.08'
W95°14.95'
L-19-21, H-7

HUMBIE
116.6 IAH
Chan 113

POLK
108.4 FXU
Chan 110
N31°18.27'
W90°15.49'

DAISETTA
116.9 DAS
Chan 116
N31°18.27'
W90°15.49'

RAECN
N30°05.08'
W95°14.95'
L-19-21, H-7

HUMBIE
116.6 IAH
Chan 113

POLK
108.4 FXU
Chan 110
N31°18.27'
W90°15.49'

DAISETTA
116.9 DAS
Chan 116
N31°18.27'
W90°15.49'

RAECN
N30°05.08'
W95°14.95'
L-19-21, H-7

HUMBIE
116.6 IAH
Chan 113

POLK
108.4 FXU
Chan 110
N31°18.27'
W90°15.49'

DAISETTA
116.9 DAS
Chan 116
N31°18.27'
W90°15.49'

RAECN
N30°05.08'
W95°14.95'
L-19-21, H-7

HUMBIE
116.6 IAH
Chan 113

POLK
108.4 FXU
Chan 110
N31°18.27'
W90°15.49'

DAISETTA
116.9 DAS
Chan 116
N31°18.27'
W90°15.49'

NOTE: RADAR required.
NOTE: The following TRANSITIONS are ATC assigned only. Do not file.
CRESTVIEW TRANSITION: (For aircraft being weather rerouted to join a jet route off CEW VORTAC or overflying CEW VORTAC to join a direct route).
GREENE COUNTY TRANSITION: (For aircraft being weather rerouted to join a jet route off GCV VORTAC or overflying GCV VORTAC to join a direct route).
MC COMB TRANSITION: (For aircraft being weather rerouted to join a jet route off MCB VORTAC or overflying MCB VORTAC to join a direct route).

TAKEOFF MINIMUMS
Rwys 17R, 35L: Standard.
Rwys 17L, 35R: NA - Environmental.
Waterway 17, 35: NA - Air Traffic.

NOTE: Chart not to scale.

(NARRATIVE ON FOLLOWING PAGE)

SC-5, 08 NOV 2018 to 06 DEC 2018

ALEXANDRIA ONE DEPARTURE