

(BLTWY5.BLTWY) 18200

BLTWY FIVE DEPARTURE (RNAV)

DAVID WAYNE HOOKS MEMORIAL (DWH)
AL-5457 (FAA) HOUSTON, TEXAS

ATIS
128.375
CLNC DEL
119.45
GND CON
121.8 239.0
HOOKS TOWER ★
127.4 354.1 (EAST)
118.4 (CTAF) 354.1 (WEST)
HOUSTON DEP CON
119.7 281.4

**TOP ALTITUDE:
ASSIGNED BY ATC**

NOTE: RADAR required.
NOTE: DME/DME/IRU or GPS required.
NOTE: RNAV 1.

TAKEOFF MINIMUMS

Rwys 17L, 35R: NA - Environmental.
Waterways 17, 35: NA - Air Traffic.
Rwys 17R, 35L: Standard with minimum
climb of 500' per NM to 660.

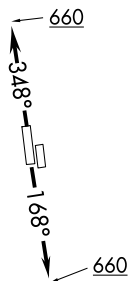
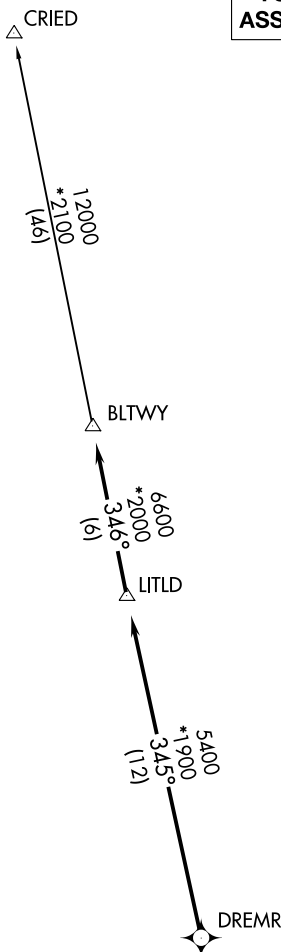
▼ DEPARTURE ROUTE DESCRIPTION

TAKEOFF RWY 17R: Climb on heading
168° to 660 for RADAR vectors to
DREMR, thence

TAKEOFF RWYS 35L: Climb on heading
348° to 660 for RADAR vectors to
DREMR, thence

...on track 345° to LITLD, then on track
346° to BLTWY, then on (transition).
Maintain ATC assigned altitude. Expect
filed altitude 10 minutes after departure.

CRIED TRANSITION (BLTWY5.CRIED)



NOTE: Chart not to scale.

BLTWY FIVE DEPARTURE (RNAV)

(BLTWY5.BLTWY) 19JUL18

HOUSTON, TEXAS
DAVID WAYNE HOOKS MEMORIAL (DWH)

SC-5, 08 NOV 2018 to 06 DEC 2018

SC-5, 08 NOV 2018 to 06 DEC 2018