

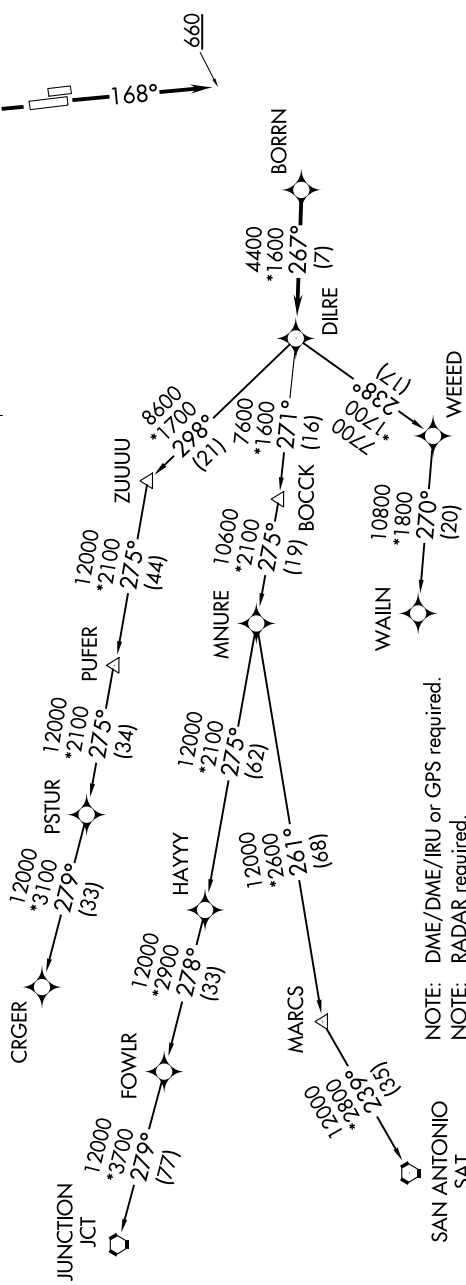
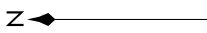
BORRN THREE DEPARTURE (RNAV)

HOUSTON, TEXAS

**TOP ALTITUDE:
ASSIGNED BY ATC**

TAKEOFF MINIMUMS:
 Rwys 17L, 35R: NA - Environmental.
 Waterway 17, 35: NA - Air Traffic.
 Rwys 17R, 35L: Standard with minimum
 climb of 500' per NM to 660.

ATIS 128.375
 CINCDL 119.45
 GND CON 121.8 239.0
 HOOKS TOWER * 127.4 354.1 (EAST)
 118.4 (CTAF) 354.1 (WEST)
 HOUSTON DEP CON 123.8 257.7 (Rwys 17L/R)
 119.7 281.4 (Rwys 35L/R)



NOTE: DME/DME/IRU or GPS required.
 NOTE: RADAR required.
 NOTE: RNAV 1.
 NOTE: CRGR TRANSITION ATC assigned only
 for aircraft departing 54T, AXH, EFD, GLS,
 HPY, IWS, LBX, LVJ, SGR, TME, T00, T41.

(NARRATIVE ON FOLLOWING PAGE)

NOTE: Chart not to scale.

SC-5, 08 NOV 2018 to 06 DEC 2018

SC-5, 08 NOV 2018 to 06 DEC 2018

BORRN THREE DEPARTURE (RNAV)

(BORRN3.BORRN) 22JUN17

HOUSTON, TEXAS

DAVID WAYNE HOOKS MEMORIAL (DWH)