

(LURIC6.LURIC) 18200

AL-5457 (FAA)

DAVID WAYNE HOOKS MEMORIAL (DWH)

HOUSTON, TEXAS

LURIC SIX DEPARTURE (RNAV)

ATIS
 128.375
 CLNC DEL
 119.45
 GND CON
 121.8 239.0
 HOOKS TOWER ★
 127.4 354.1 (EAST)
 118.4 (CTAF) 354.1 (WEST)
 HOUSTON DEP CON
 119.7 281.4

TOP ALTITUDE: ASSIGNED BY ATC

NOTE: RADAR required.
 NOTE: DME/DME/IRU or GPS required.
 NOTE: RNAV 1.

TAKEOFF MINIMUMS

Rwys 17L, 35R: NA-Environmental.
 Waterways 17, 35: NA-Air Traffic.
 Rwys 17R, 35L: Standard with minimum
 climb of 500' per NM to 660.

DEPARTURE ROUTE DESCRIPTION

TAKEOFF RWY 17R: Climb heading 168° to 660 for RADAR vectors to KNTKY, thence . . .

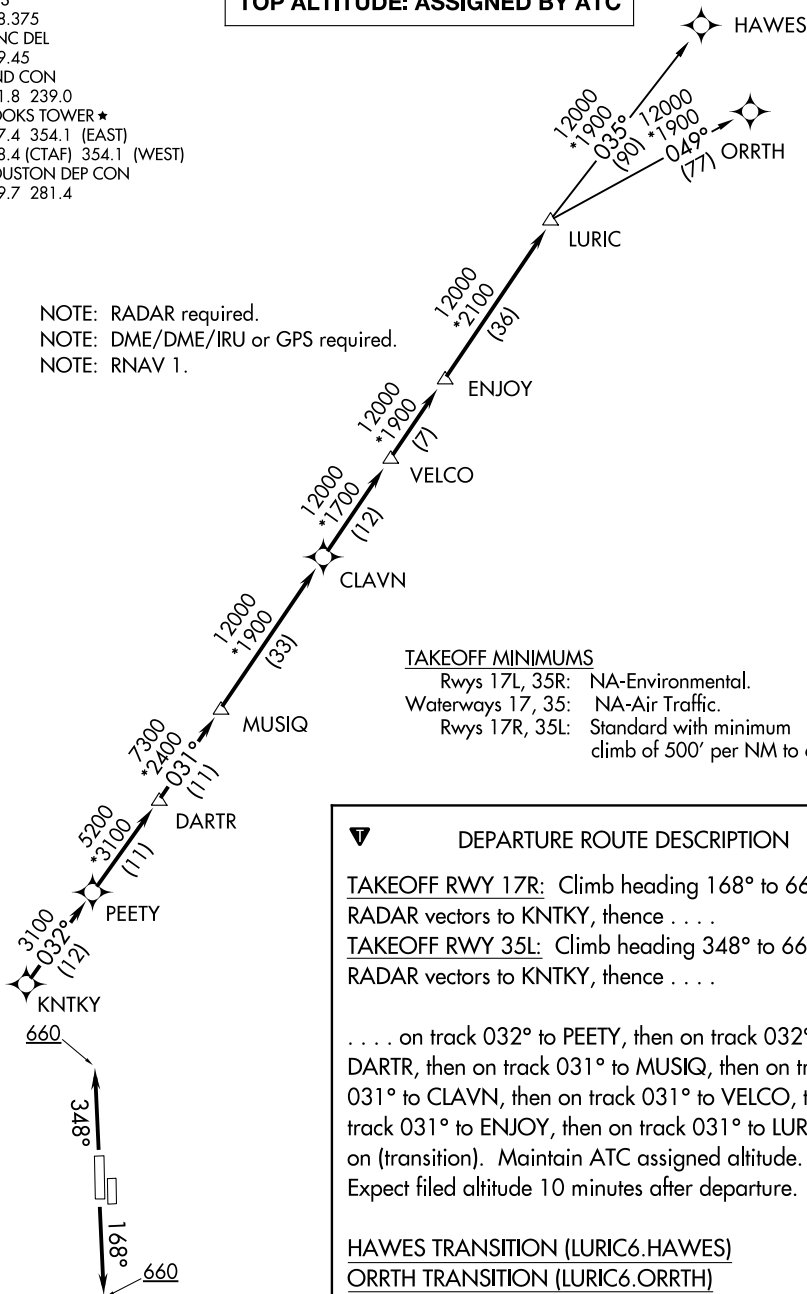
TAKEOFF RWY 35L: Climb heading 348° to 660 for RADAR vectors to KNTKY, thence . . .

. . . on track 032° to PEETY, then on track 032° to DARTR, then on track 031° to MUSIQ, then on track 031° to CLAVN, then on track 031° to VELCO, then on track 031° to ENJOY, then on track 031° to LURIC, then on (transition). Maintain ATC assigned altitude. Expect filed altitude 10 minutes after departure.

HAWES TRANSITION (LURIC6.HAWES)

ORRTH TRANSITION (LURIC6.ORRTH)

NOTE: Chart not to scale.



SC-5, 08 NOV 2018 to 06 DEC 2018

SC-5, 08 NOV 2018 to 06 DEC 2018

LURIC SIX DEPARTURE (RNAV)

(LURIC6.LURIC) 19JUL18

HOUSTON, TEXAS

DAVID WAYNE HOOKS MEMORIAL (DWH)