

(STYCK6.STYCK) 18200

AL-5457 (FAA)

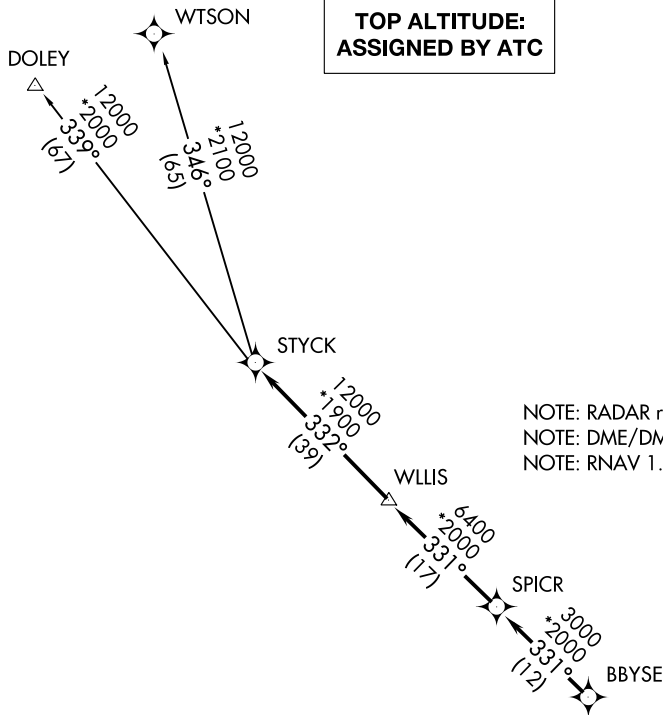
DAVID WAYNE HOOKS MEMORIAL (DWH)

# STYCK SIX DEPARTURE (RNAV)

HOUSTON, TEXAS

**TOP ALTITUDE:  
ASSIGNED BY ATC**

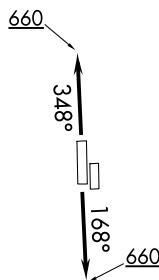
ATIS 128.375  
 CLNC DEL 119.45  
 GND CON 121.8 239.0  
 HOOKS TOWER \* 127.4 354.1 (EAST)  
 118.4 (CTAF) 354.1 (WEST)  
 HOUSTON DEP CON 119.7 281.4



NOTE: RADAR required.  
 NOTE: DME/DME/IRU or GPS required.  
 NOTE: RNAV 1.

### TAKEOFF MINIMUMS

Rws 17L, 35R: NA-Environmental.  
 Waterways 17, 35: NA-Air traffic.  
 Rws 17R, 35L: Standard with minimum climb of 500' per NM to 660.



NOTE: Chart not to scale.

### DEPARTURE ROUTE DESCRIPTION

TAKEOFF RWY 17R: Climb heading 168° to 660 for RADAR vectors to BBYSE, thence. . . .

TAKEOFF RWY 35L: Climb heading 348° to 660 for RADAR vectors to BBYSE, thence. . . .

. . . on track 331° to SPICR, then on track 331° to WLLIS, then on track 332° to STYCK, then on (transition). Maintain ATC assigned altitude. Expect filed altitude 10 minutes after departure.

DOLEY TRANSITION (STYCK6.DOLEY)

WTSON TRANSITION (STYCK6.WTSON)

# STYCK SIX DEPARTURE (RNAV)

(STYCK6.STYCK) 19JUL18

HOUSTON, TEXAS

DAVID WAYNE HOOKS MEMORIAL (DWH)

SC-5, 08 NOV 2018 to 06 DEC 2018

SC-5, 08 NOV 2018 to 06 DEC 2018