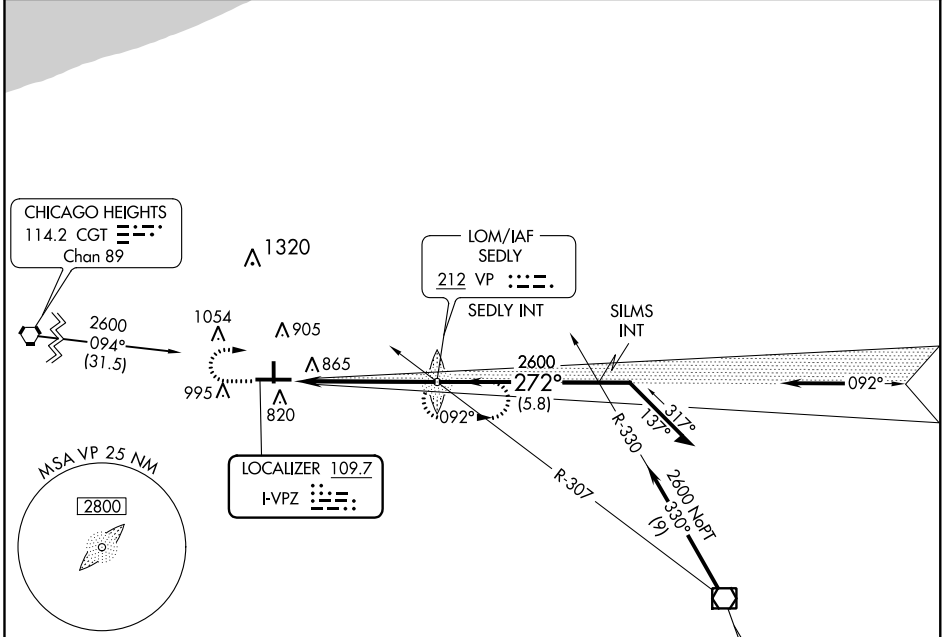


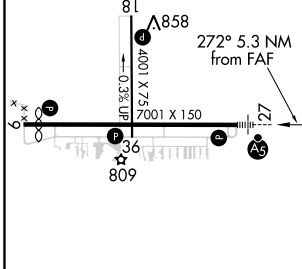
LOC I-VPZ <b>109.7</b>	APP CRS <b>272°</b>	Rwy Idg TDZE Apt Elev	<b>6500</b> <b>770</b> <b>771</b>
---------------------------	------------------------	-----------------------------	---

**ILS RWY 27**  
PORTER COUNTY RGNL (VPZ)

	MALS R	MISSED APPROACH: Climb to 1400, then climbing right turn to 2600 direct SEDLY LOM and hold.	
ASOS <b>125.875</b>	SOUTH BEND APP CON * <b>132.05 257.8</b>	CLNC DEL <b>120.525</b>	UNICOM <b>122.725 (CTAF)</b>



ELEV 771	D	TDZE 770
----------	---	----------



HIRL Rwy 9-27

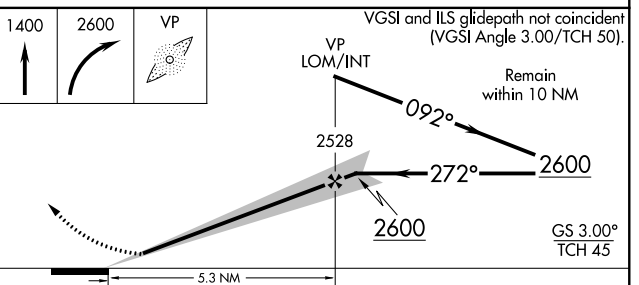
MIRL Rwy 18-36

REIL Rwys 9, 18 and 36

FAF to MAP 5.3 NM

Knots	60	90	120	150	180
Min:Sec	5:18	3:32	2:39	2:07	1:46

**ADF REQUIRED**



CATEGORY	A	B	C	D
S-ILS 27	970-½ 200 (200-½)			
S-LOC 27	1120-½ 350 (400-½)			1120-¾ 350 (400-¾)
CIRCLING	1260-1 489 (500-1)	1300-1 529 (600-1)	1300-1½ 529 (600-1½)	1360-2 589 (600-2)

EC-2, 08 NOV 2018 to 06 DEC 2018

EC-2, 08 NOV 2018 to 06 DEC 2018