

WHAEL THREE ARRIVAL

HOUSTON, TEXAS

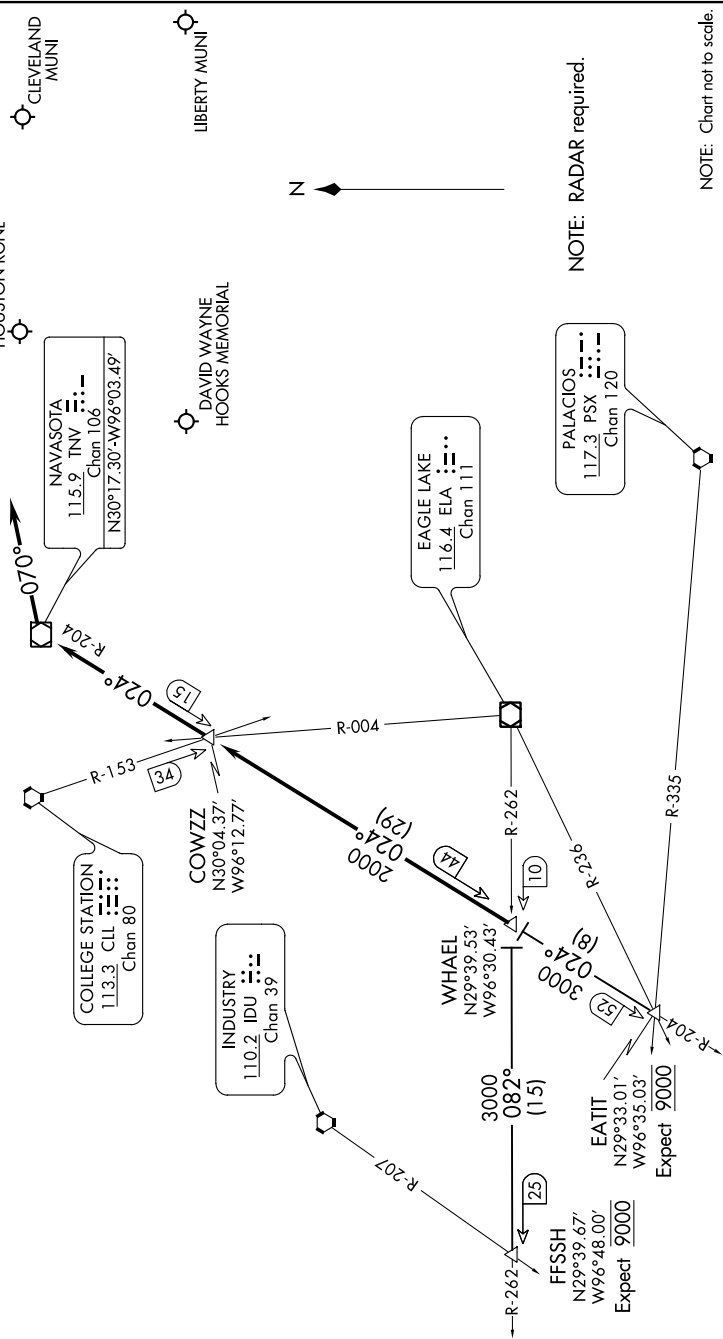
SC-5, 08 NOV 2018 to 06 DEC 2018

ARRIVAL DESCRIPTION

FFSSH TRANSITION (FFSSH.WHAEL3): From over FFSSH INT on ELA R-262 to WHAEL INT. Thence, . . .

EATIT TRANSITION (EATIT.WHAEL3): From over EATIT INT on TNV R-204 to WHAEL INT. Thence, . . .

. . . from over WHAEL INT on TNV R-204 to COWZZ INT, then on TNV R-204 to TNV VOR/DME. Depart TNV VOR/DME heading 070° for vectors to final approach course.



NOTE: Chart not to scale.

WHAEL THREE ARRIVAL

HOUSTON, TEXAS

SC-5, 08 NOV 2018 to 06 DEC 2018