


WAAS CH 82021 W25A	APP CRS 249°	Rwy Idg TDZE Apt Elev	6000 1038 1062
--	------------------------	-----------------------------	---


RNAV (GPS) RWY 25

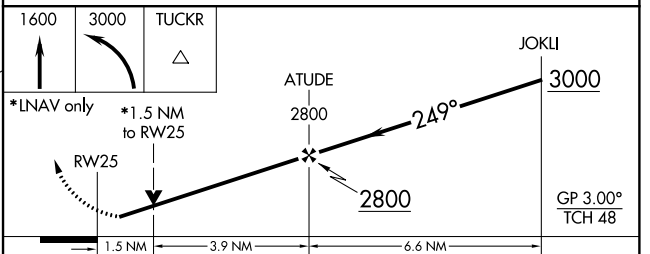
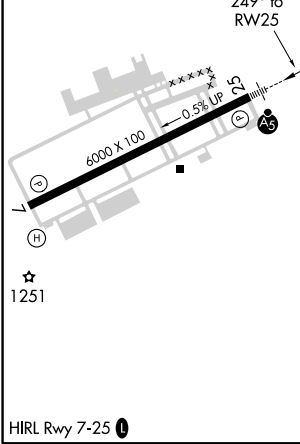
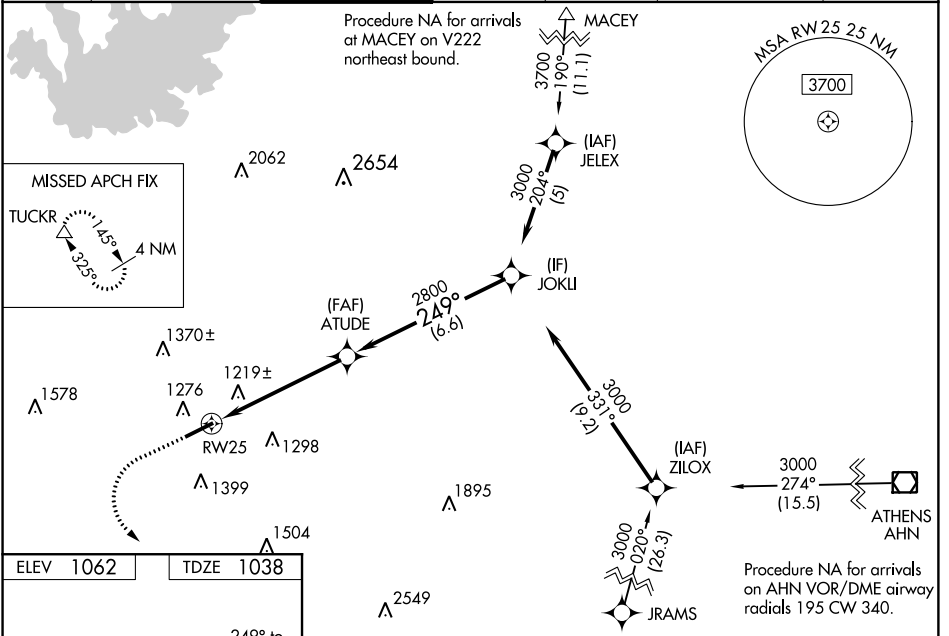
GWINNETT COUNTY-BRISCOE FIELD (LZU)

Baro-VNAV NA when using Winder altimeter setting. For uncompensated Baro-VNAV systems, LNAV/VNAV NA below -17°C (2°F) or above 54°C (130°F). DME/DME RNP-0.3 NA. When local altimeter setting not received, use Winder altimeter setting and increase all DA 51 feet and all MDA 60 feet; increase LNAV/VNAV all Cats, LNAV Cat C/D and Circling Cat C/D visibility ¼ mile. For inop MALSRS, increase LNAV Cat C/D visibility to 1½ mile. For inop MALSRS when using Winder altimeter setting; increase LNAV/VNAV all Cats visibility to 1½ mile and LNAV Cat C/D visibility to 1½ mile.

MALSRS 

MISSED APPROACH: Climb to 1600 then climbing left turn to 3000 direct TUCKR and hold.

ATIS 132.275	ATLANTA APP CON 126.975 239.275	GWINNETT TOWER * 124.1 (CTAF) 	GND CON 121.8	CLNC DEL 121.8	ATLANTA CLNC DEL 134.0 (When tower closed)	UNICOM 123.05
------------------------	---	---	-------------------------	--------------------------	---	-------------------------



CATEGORY	A	B	C	D
LPV DA		1238-½	200 (200-½)	
LNAV/VNAV DA		1544-1¼	506 (500-1¼)	
LNAV MDA	1540-½	502 (500-½)	1540-1	502 (500-1)
CIRCLING	1640-1	578 (600-1)	1640-1½ 578 (600-1½)	1700-2 638 (700-2)

SE-4, 06 DEC 2018 to 03 JAN 2019

SE-4, 06 DEC 2018 to 03 JAN 2019