

APP CRS 263°	Rwy Idg 3779
	TDZE 632
	Apt Elev 634

RNAV (GPS) RWY 26

GRIFFITH-MERRILLVILLE (Ø5C)

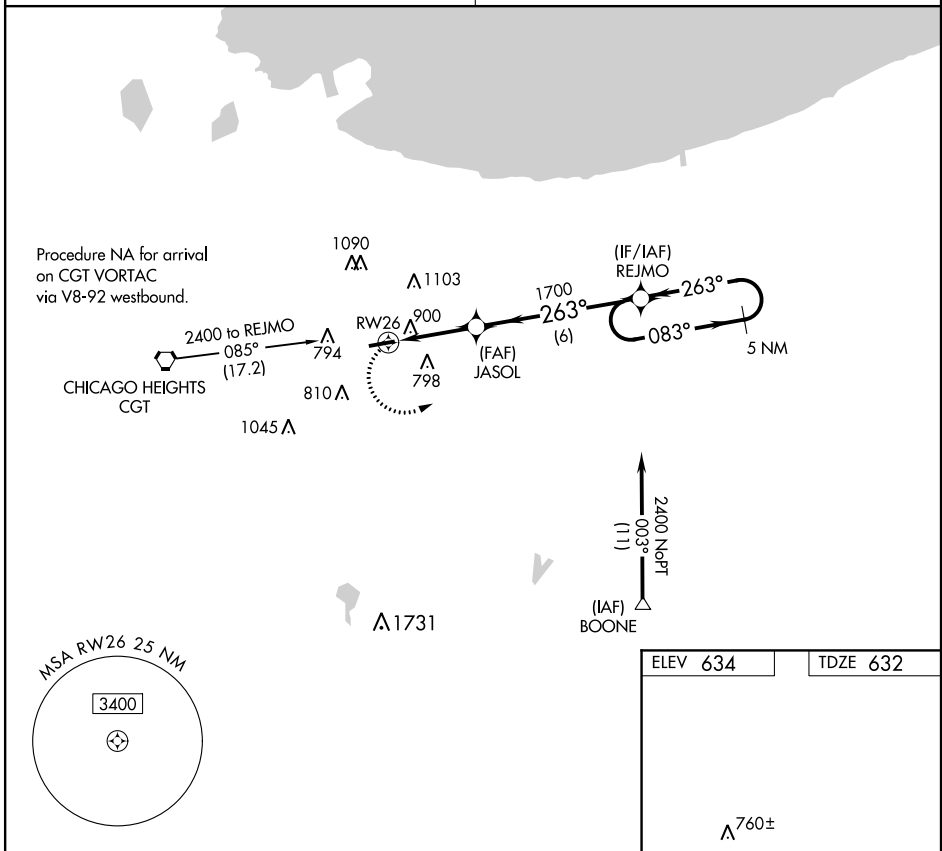
RNP APCH

Obtain local altimeter setting on CTAF; when not received use Chicago Midway Initial altimeter setting and increase all MDAs 60 feet. Visibility reduction by helicopters NA. Procedure NA at night.

MISSED APPROACH: Climbing left turn to 2400 direct REJMO and hold.

CHICAGO APP CON
133.1 285.6

UNICOM
123.0 (CTAF)



ELEV 634	TDZE 632
----------	----------

5 NM Holding Pattern

REJMO

JASOL

083° → 2400

← 263°

263° to RW26

3.03° TCH 33

1700

3.2 NM

6 NM

RW26

760± Δ

4899 X 75

REIL Rwy 8 and 26

MIRL Rwy 8-26

2400	REJMO	VGSI and descent angles not coincident (VGSI Angle 4.00/TCH 33).	5 NM Holding Pattern
CATEGORY	A	B	C D
LNAV MDA	1160-1	528 (600-1)	NA
CIRCLING	1200-1	566 (600-1)	NA