

GRIFFITH, INDIANA

AL-5431 (FAA)

18312

VORTAC CGT 114.2 Chan 89	APP CRS 084°	Rwy Idg TDZE 634 Apt Elev 634	4899
--	------------------------	---	-------------

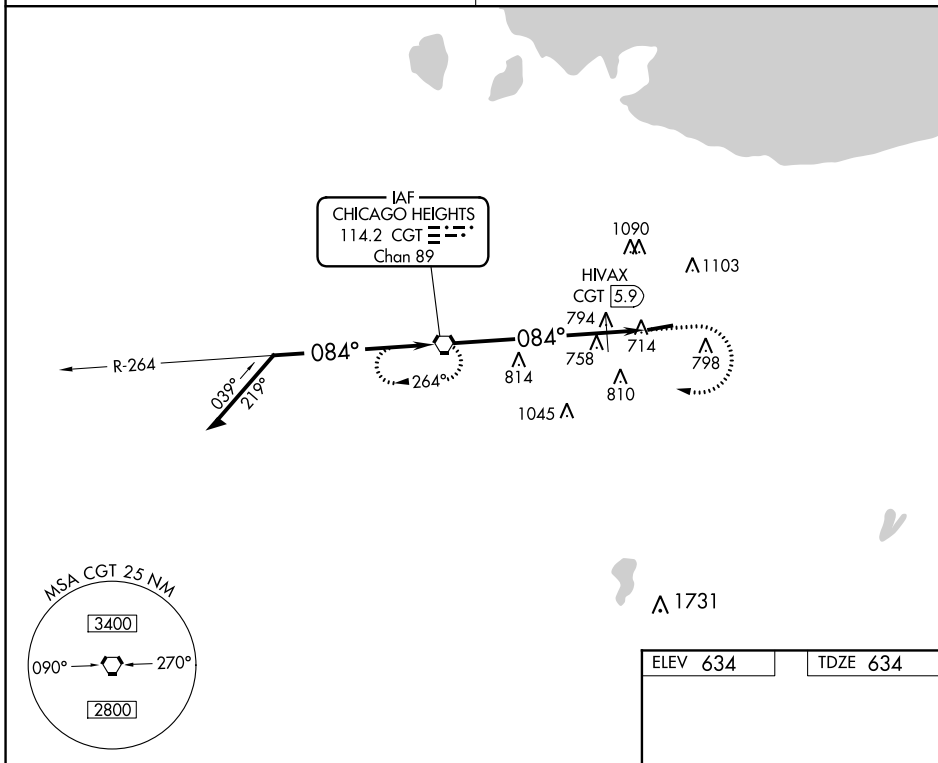
VOR RWY 8
GRIFFITH-MERRILLVILLE (05C)

NA Obtain local altimeter setting on CTAF; when not received, use Chicago Midway Intl altimeter setting and increase all MDAs 60 feet. Visibility reduction by helicopters NA. Procedure NA at night.

MISSED APPROACH: Climb to 1100 then climbing right turn to 2300 direct CGT VORTAC and hold.

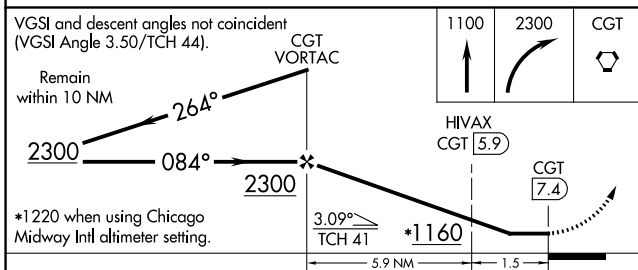
CHICAGO APP CON
133.1 285.6

UNICOM
123.0 (CTAF) 0

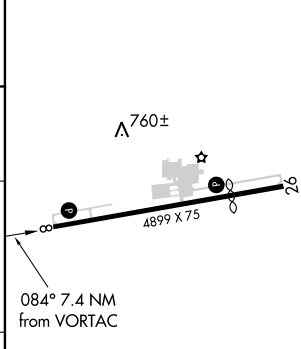


EC-2, 06 DEC 2018 to 03 JAN 2019

EC-2, 06 DEC 2018 to 03 JAN 2019



ELEV 634	TDZE 634
----------	----------



CATEGORY	A	B	C	D
S-8	1160-1	526 (600-1)		NA
CIRCLING	1200-1	566 (600-1)		NA
HIVAX FIX MINIMUMS				
S-8	1060-1	426 (500-1)		NA
CIRCLING	1200-1	566 (600-1)		NA

REIL Rwy 8 and 26 0	
MIRL Rwy 8-26 0	
FAF to MAP 7.4 NM	
Knots	60 90 120 150 180
Min:Sec	7:24 4:56 3:42 2:58 2:28

GRIFFITH, INDIANA
Amdt 8B 24MAY18

41°31'N-87°24'W

GRIFFITH-MERRILLVILLE (05C)
VOR RWY 8