

(STYCK6.STYCK) 18200

AL-5457 (FAA)

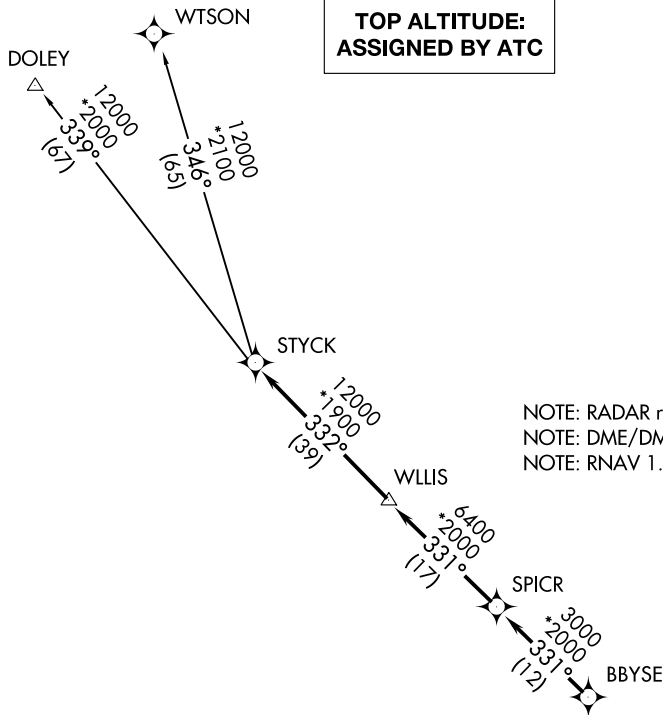
DAVID WAYNE HOOKS MEMORIAL (DWH)

STYCK SIX DEPARTURE (RNAV)

HOUSTON, TEXAS

**TOP ALTITUDE:
ASSIGNED BY ATC**

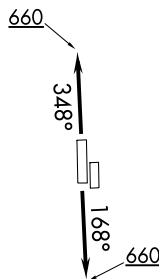
ATIS 128.375
 CLNC DEL 119.45
 GND CON 121.8 239.0
 HOOKS TOWER * 127.4 354.1 (EAST)
 118.4 (CTAF) 354.1 (WEST)
 HOUSTON DEP CON 119.7 281.4



NOTE: RADAR required.
 NOTE: DME/DME/IRU or GPS required.
 NOTE: RNAV 1.

TAKEOFF MINIMUMS

Rws 17L, 35R: NA-Environmental.
 Waterways 17, 35: NA-Air traffic.
 Rws 17R, 35L: Standard with minimum climb of 500' per NM to 660.



NOTE: Chart not to scale.



DEPARTURE ROUTE DESCRIPTION

TAKEOFF RWY 17R: Climb heading 168° to 660 for RADAR vectors to BBYSE, thence. . . .

TAKEOFF RWY 35L: Climb heading 348° to 660 for RADAR vectors to BBYSE, thence. . . .

. . . .on track 331° to SPICR, then on track 331° to WLLIS, then on track 332° to STYCK, then on (transition). Maintain ATC assigned altitude. Expect filed altitude 10 minutes after departure.

DOLEY TRANSITION (STYCK6.DOLEY)

WTSON TRANSITION (STYCK6.WTSON)

STYCK SIX DEPARTURE (RNAV)

(STYCK6.STYCK) 19JUL18

HOUSTON, TEXAS

DAVID WAYNE HOOKS MEMORIAL (DWH)

SC-5, 06 DEC 2018 to 03 JAN 2019

SC-5, 06 DEC 2018 to 03 JAN 2019