

(WYLSN6.WYLSN) 18200

AL-5457 (FAA)

DAVID WAYNE HOOKS MEMORIAL (DWH)

# WYLSN SIX DEPARTURE (RNAV)

HOUSTON, TEXAS

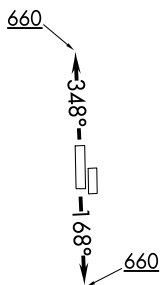
ATIS  
 128.375  
 CLNC DEL  
 119.45  
 GND CON  
 121.8 239.0  
 HOOKS TOWER\*  
 127.4 354.1 (EAST)  
 118.4 (CTAF) 354.1 (WEST)  
 HOUSTON DEP CON  
 119.7 281.4

**TOP ALTITUDE:  
ASSIGNED BY ATC**

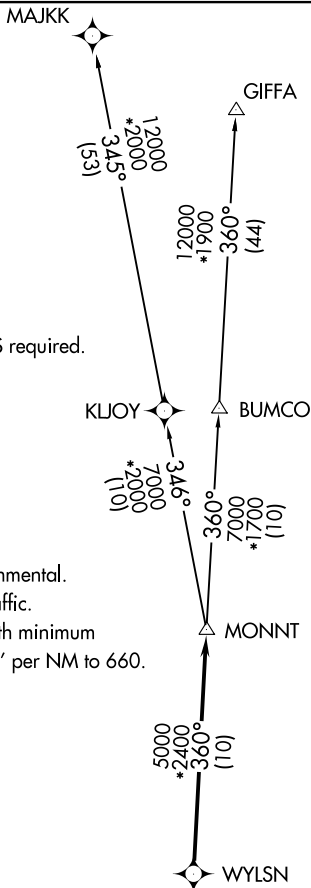
NOTE: RADAR required.  
 NOTE: DME/DME/IRU or GPS required.  
 NOTE: RNAV 1.

### TAKEOFF MINIMUMS

Rwy 17L, 35R: NA - Environmental.  
 Waterway 17, 35: NA - Air Traffic.  
 Rwy 17R, 35L: Standard with minimum  
 climb of 500' per NM to 660.



NOTE: Chart not to scale.



### DEPARTURE ROUTE DESCRIPTION

TAKEOFF RWY 17R: Climb on heading 168° to 660 for RADAR vectors to WYLSN, thence. . . .  
TAKEOFF RWY 35L: Climb on heading 348° to 660 for RADAR vectors to WYLSN, thence. . . .

. . . .on track 360° to MONNT, then on (transition). Maintain ATC assigned altitude. Expect filed altitude 10 minutes after departure.

GIFFA TRANSITION (WYLSN6.GIFFA)  
MAJKK TRANSITION (WYLSN6.MAJKK)

SC-5, 06 DEC 2018 to 03 JAN 2019

SC-5, 06 DEC 2018 to 03 JAN 2019

# WYLSN SIX DEPARTURE (RNAV)

HOUSTON, TEXAS

(WYLSN6.WYLSN) 19JUL18

DAVID WAYNE HOOKS MEMORIAL (DWH)