

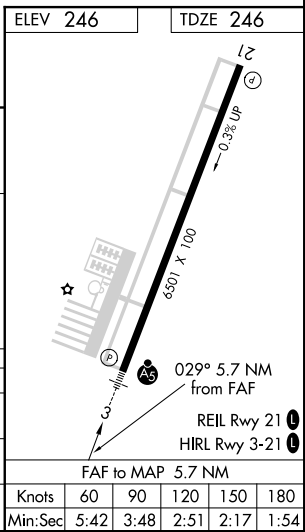
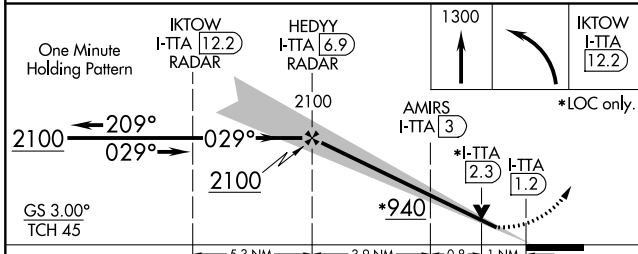
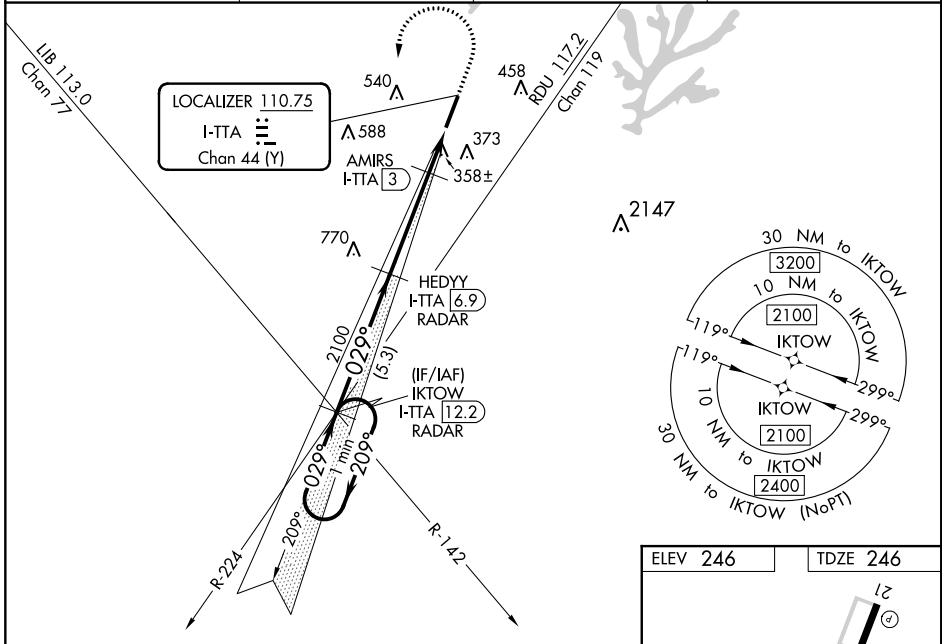
LOC/DME I-TTA 110.75 Chan 44 (Y)	APP CRS 029°	Rwy Idg TDZE Apt Elev	6501 246 246
---	------------------------	-----------------------------	---

RALEIGH
EXECUTIVE JETPORT AT SANFORD-LEE COUNTY (TTA)

ILS Y or LOC Y RWY 3

RNAV 1-GPS required.		MALSR 	MISSED APPROACH: Climb to 1300 then climbing left turn direct IKTOW and hold.
RNAV 1-GPS required or RADAR required for procedure entry.			
<p>⚠ When local altimeter setting not received, use Raleigh/Durham altimeter setting; increase DA to 527 feet; increase all MDAs 100 feet and S-LOC 3 Cats C and D visibility to 1 SM and Circling Cat C visibility to 2 SM and Cat D to 2 1/4 SM. For inop ALS, increase S-LOC 3 Cats C and D visibility to 1 SM. For inop ALS when using Raleigh/Durham altimeter setting, increase S-ILS 3 all Cats visibility to 1/2 SM and increase S-LOC 3 Cats C and D visibility to 1 1/2 SM. VDP NA when using Raleigh/Durham altimeter setting.</p>			

AWOS-3 120.625	RALEIGH APP CON 125.3 353.675	UNICOM 123.075 (CTAF) U	GC0 135.075
--------------------------	---	--	-----------------------



CATEGORY	A	B	C	D
S-ILS 3	446-1/2		200 (200-1/2)	
S-LOC 3	620-1/2	374 (400-1/2)	620-5/8	374 (400-5/8)
C CIRCLING	760-1 514 (600-1)	820-1 574 (600-1)	840-1 1/2 594 (600-1 1/2)	960-2 1/4 714 (800-2 1/4)

ILS Y or LOC Y RWY 3

SE-2: 06 DEC 2018 to 03 JAN 2019

SE-2: 06 DEC 2018 to 03 JAN 2019