

WAAS CH <b>86522</b> <b>W21A</b>	APP CRS <b>209°</b>	Rwy Idg TDZE Apt Elev	<b>6501</b> <b>230</b> <b>246</b>
--	------------------------	-----------------------------	---

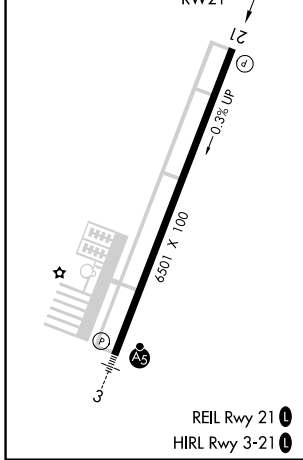
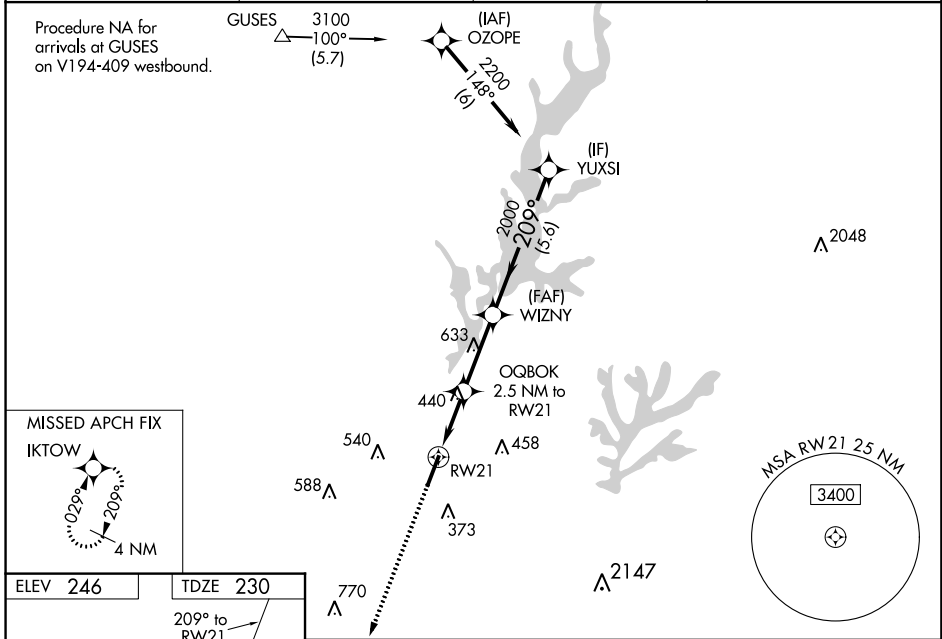
# RNAV (GPS) RWY 21

RALEIGH EXECUTIVE JETPORT AT SANFORD-LEE COUNTY (T1A)

**⚠** Baro-VNAV NA when using Raleigh/Durham altimeter setting. For uncompensated Baro-VNAV systems, LNAV/VNAV NA below -15°C (5°F) or above 54°C (130°F). DME/DME RNP-0.3 NA. When local altimeter setting not received, use Raleigh/Durham altimeter setting and increase all DA 81 feet and all MDA 100 feet. Increase LPV all Cats visibility to 1½ mile, LNAV/VNAV all Cats visibility to 1½ mile, LNAV Cats C and D visibility to 1½ mile, and Circling Cat C visibility to 2 mile and Cat D visibility to 2½ mile. Helicopter visibility reduction below ¾ SM NA. VDP NA when using Raleigh/Durham altimeter setting.

**MISSED APPROACH:**  
Climb to 2100 direct  
IKTOW and hold.

AWOS-3 <b>120.625</b>	RALEIGH APP CON <b>125.3 353.675</b>	UNICOM <b>123.075(CTAF) 0</b>	GCO <b>135.075</b>
--------------------------	---	----------------------------------	-----------------------



ELEV <b>246</b>	TDZE <b>230</b>				
2100 IKTOW	OQBOK 2.5 NM to RW21	WIZNY 2000	YUXSI 2200		
*LNAV only.	*1.4 NM to RW21	*1060	2000	GP 3.00° TCH 45	
1.4 NM	1.1 NM	2.9 NM	5.6 NM		
CATEGORY	A	B	C	D	
LPV DA	530-1		300 (300-1)		
LNAV/VNAV DA	480-7/8		250 (300-7/8)		
LNAV MDA	700-1	470 (500-1)	700-1 3/8		470 (500-1 3/8)
<b>C</b> CIRCLING	760-1 514 (600-1)	820-1 574 (600-1)	840-1 1/2 594 (600-1 1/2)	960-2 1/4 714 (800-2 1/4)	

SE-2: 06 DEC 2018 to 03 JAN 2019

SE-2: 06 DEC 2018 to 03 JAN 2019