

MCKINNEY NATIONAL (TKI)(KTKI) 32 N UTC-6(-5DT) N33°10.62' W96°35.33'

589 B NOTAM FILE TKI

RWY 18-36: H7002X150 (CONC) S-75, D-150, 2D-450 HIRL

RWY 18: MALSR. PAPI(P4L)—GA 3.0° TCH 50'.

RWY 36: MALSR. PAPI(P4L)—GA 3.0° TCH 50'. Rgt t/c.

SERVICE: S4 **FUEL** 100LL, JET A1+ **OX3** **LGT** When twr clsd **ACTIVATE**

HIRL Rwy 18-36, MALSR Rwy 18, PAPI Rwy 18 and Rwy 36—CTAF.

AIRPORT REMARKS: Attended 1200-0400Z†. Bird activity invof arpt.

AIRPORT MANAGER: 972-562-4214

WEATHER DATA SOURCES: ASOS 119.925 (972) 548-8525.

COMMUNICATIONS: CTAF 118.825 **UNICOM** 122.95

Ⓡ **REGIONAL APP/DEP CON** 124.3

TOWER 118.825 (1200-0400Z†) **GND CON** 121.875 **CLNC DEL** 121.35
(when twr clsd)

AIRSPACE: **CLASS D** svc 1200-0400Z† other times **CLASS G**.

RADIO AIDS TO NAVIGATION: NOTAM FILE FTW.

COWBOY (H) VORW/DME 116.2 **CVE** Chan 109 N32°53.42'

W96°54.24' 037° 23.4 NM to fld. 447/6E.

MELISA NDB (MHW) 421 **VLY** N33°15.71'

W96°35.33' 177° 5.1 NM to fld. 640/3E. NOTAM FILE TKI.

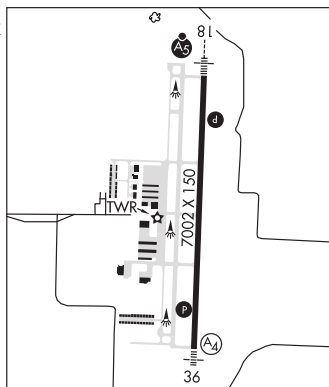
ILS/DME 109.35 **I-EFE** Chan 30(Y) Rwy 18. Unmonitored when
ATCT clsd.

DALLAS-FT WORTH

COPTER

H-6H, L-17C, A

IAP, AD



DALLAS SOUTH PORT (See PALMER on page 358)