

WAAS CH 86624 W07A	APP CRS 066°	Rwy Idg 3375 TDZE 543 Apt Elev 543
--	------------------------	---

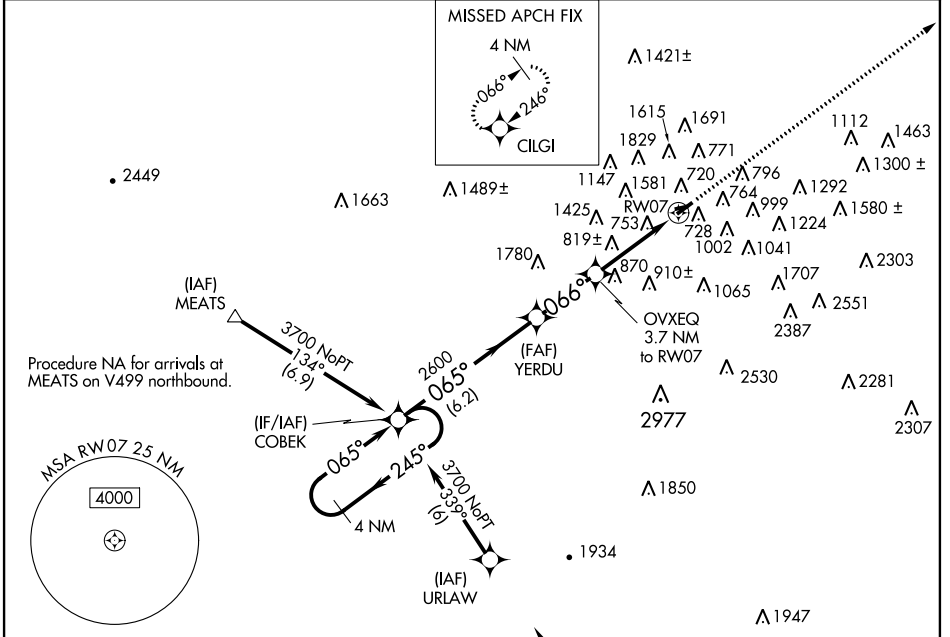
RNAV (GPS) RWY 7

WILKES-BARRE WYOMING VALLEY (WBW)

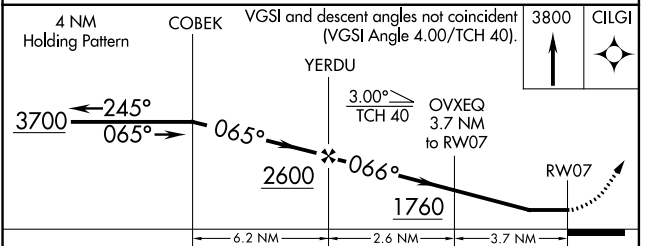
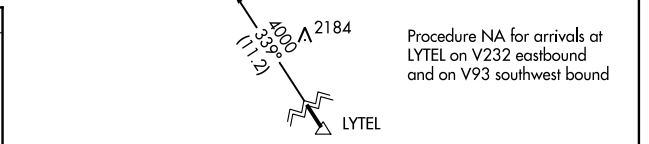
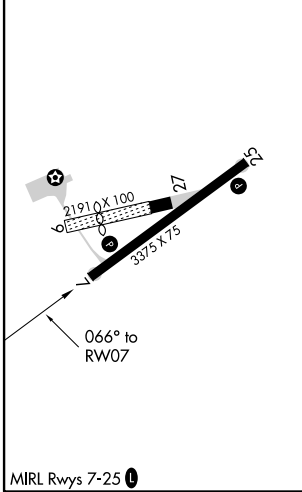
NA Use Wilkes-Barre/Scranton altimeter setting. When VGSI inop, Straight-in/Circling Rwy 7 procedure NA at night. DME/DME RNP-0.3 NA. Visibility reduction by helicopters NA. Circling NA NW of Rwy 7-25.

MISSED APPROACH: Climb to 3800 direct CILGI and hold.

WILKES-BARRE/SCRANTON ATIS 111.6	WILKES-BARRE APP CON 126.3 256.7	UNICOM 122.8 (CTAF) 0
--	--	---------------------------------



ELEV 543	TDZE 543
----------	----------



CATEGORY	A	B	C	D
LP MDA	1160-1	617 (700-1)		NA
LNAV MDA	1300-1 757 (800-1)	1300-1/4 757 (800-1/4)		NA
CIRCLING	1300-1 757 (800-1)	1300-1/4 757 (800-1/4)		NA

NE-4, 03 JAN 2019 to 31 JAN 2019

NE-4, 03 JAN 2019 to 31 JAN 2019