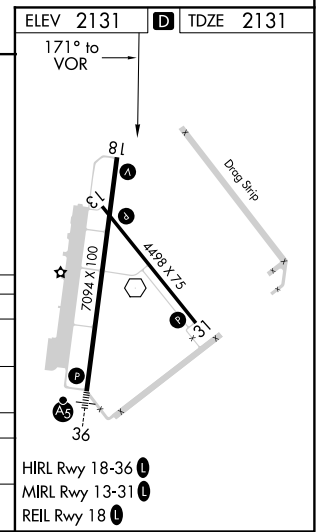
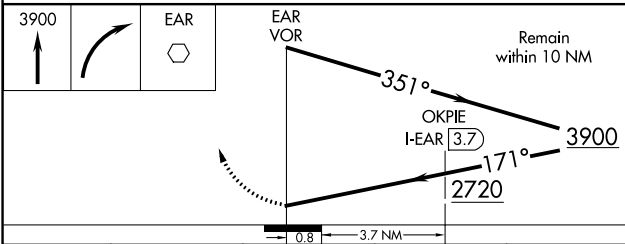
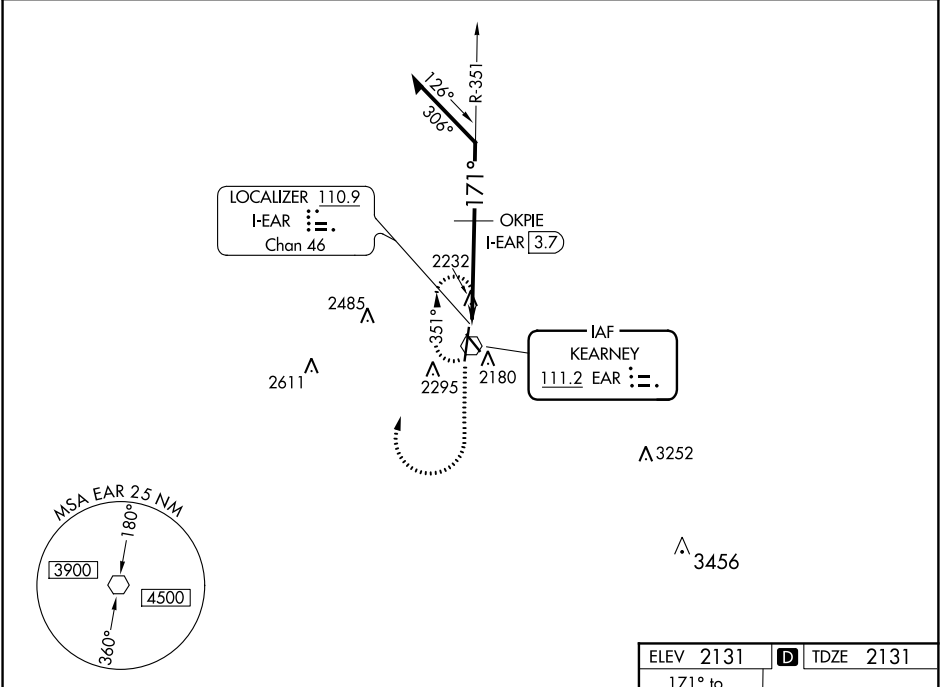


VOR EAR <b>111.2</b>	APP CRS <b>171°</b>	Rwy Idg TDZE Apt Elev	<b>7094</b> <b>2131</b> <b>2131</b>
-------------------------	------------------------	-----------------------------	---

**VOR RWY 18**  
KEARNEY RGNL (EAR)

▼ MISSED APPROACH: Climb to 3900 then right turn direct EAR VOR and hold.

AWOS-3PT <b>123.875</b>	MINNEAPOLIS CENTER <b>119.4 278.8</b>	UNICOM <b>123.0 (CTAF) 0</b>
----------------------------	--	---------------------------------



CATEGORY	A	B	C	D
S-18	2720-1 589 (600-1)		2720-1½ 589 (600-1½)	2720-1¾ 589 (600-1¾)
CIRCLING	2720-1 589 (600-1)		2720-1½ 589 (600-1½)	2720-2 589 (600-2)
OKPIE MINIMUMS				
S-18	2580-1 449 (500-1)		2580-1¼ 449 (500-1¼)	2580-1½ 449 (500-1½)
CIRCLING	2600-1 469 (500-1)		2600-1½ 469 (500-1½)	2700-2 569 (600-2)

NC-2, 03 JAN 2019 to 31 JAN 2019

NC-2, 03 JAN 2019 to 31 JAN 2019