


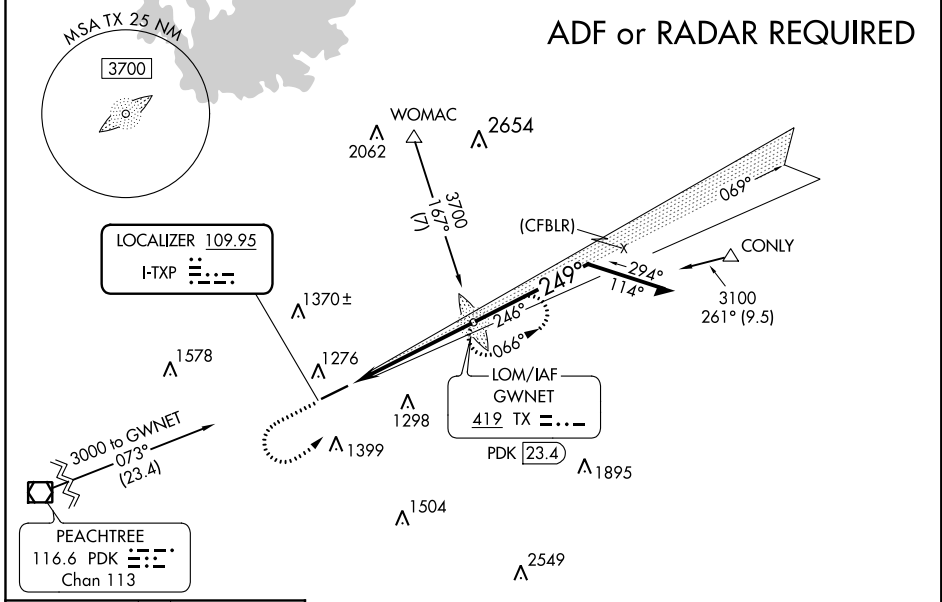
LOC I-TXP 109.95	APP CRS 249°	Rwy Idg TDZE Apt Elev	6000 1038 1062
----------------------------	------------------------	-----------------------------	---

ILS or LOC RWY 25
GWINNETT COUNTY-BRISCOE FIELD (LZU)

NA When local alimeter setting not received, use Winder alimeter setting and increase all DA 51 feet, and all MDA 60 feet, increase S-LOC 25 Cat C/D and Circling Cat C/D visibility 1/2 SM. ADF required. For inop MALSR, when using Winder alimeter setting increase S-ILS 25 all Cats visibility to 3/8 SM.

MALSR

MISSED APPROACH: Climb to 1800 then climbing left turn to 3000 direct GWINNET LOM and hold.


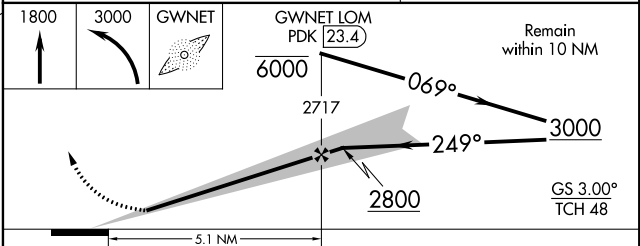
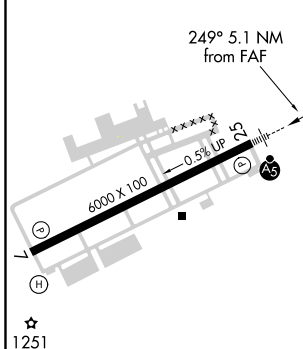
ATIS 132.275	ATLANTA APP CON 126.975 239.275	GWINNETT TOWER * 124.1 (CTAF) 1	GND CON 121.8	CLNC DEL 121.8	ATLANTA CLNC DEL 134.0 (When tower closed)	UNICOM 123.05
------------------------	---	--	-------------------------	--------------------------	---	-------------------------



ELEV 1062	TDZE 1038
-----------	-----------

ALTERNATIVE MISSED APCH FIX

GWINNET
419 TX
PDK 23.4

CATEGORY	A	B	C	D
S-ILS 25		1238-1/2	200 (200-1/2)	
S-LOC 25	1540-1/2	502 (500-1/2)	1540-1	502 (500-1)
CIRCLING	1640-1	578 (600-1)	1640-1/2 578 (600-1/2)	1700-2 638 (700-2)

SE-4, 03 JAN 2019 to 31 JAN 2019

SE-4, 03 JAN 2019 to 31 JAN 2019