

WAAS CH 97621 W07A	APP CRS 069°	Rwy Idg TDZE Apt Elev 6000 1061 1062
--	------------------------	--

RNAV (GPS) RWY 7

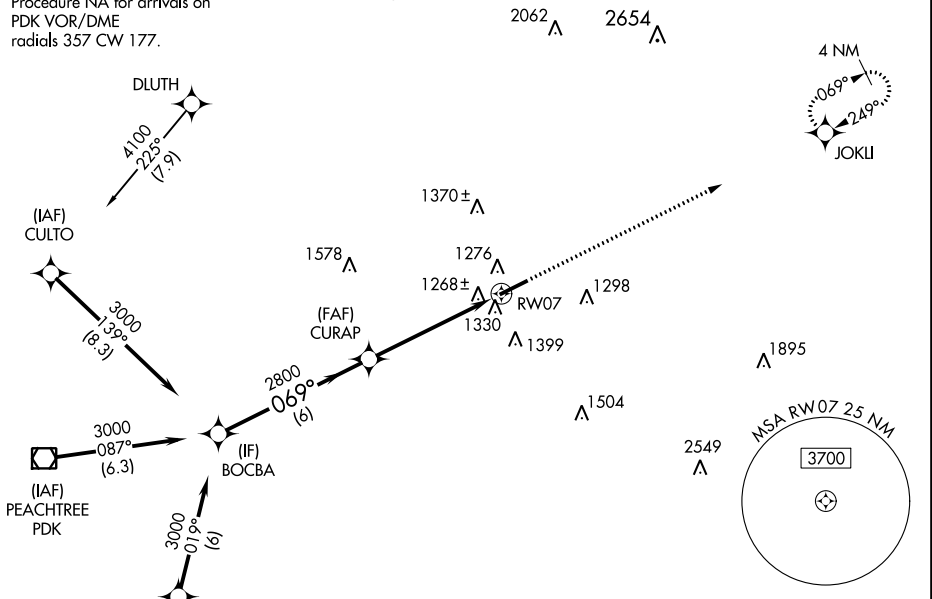
GWINNETT COUNTY-BRISCOE FIELD (LZU)

⚠ DME/DME RNP-0.3 NA. When local altimeter setting not received, use Winder altimeter setting and increase all MDA 60 feet and LNAV and Circling Cats C/D visibility ¼ mile.
⚠ Rwy 7 helicopter visibility reduction below ¾ SM NA.

MISSED APPROACH:
Climb to 3000 direct JOKLI and hold.

ATIS 132.275	ATLANTA APP CON 126.975 239.275	GWINNETT TOWER ★ 124.1 (CTAF) 0	GND CON 121.8	CLNC DEL 121.8	ATLANTA CLNC DEL 134.0 (When tower closed)	UNICOM 123.05
------------------------	---	---	-------------------------	--------------------------	---	-------------------------

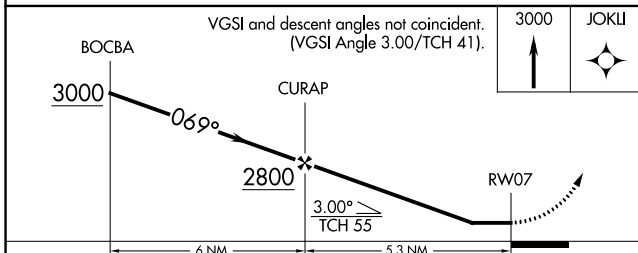
Procedure NA for arrivals on PDK VOR/DME radials 357 CW 177.



SE-4, 03 JAN 2019 to 31 JAN 2019

SE-4, 03 JAN 2019 to 31 JAN 2019

RADAR required for arrivals at HOTKA.



ELEV 1062	TDZE 1061
-----------	-----------

HIRL RWY 7-25 **0**

CATEGORY	A	B	C	D
LP MDA	1520-1	459 (500-1)	1520-1 $\frac{3}{8}$	459 (500-1 $\frac{3}{8}$)
LNAV MDA	1580-1	519 (600-1)	1580-1 $\frac{3}{8}$	519 (600-1 $\frac{3}{8}$)
CIRCLING	1640-1	578 (600-1)	1640-1 $\frac{1}{2}$ 578 (600-1 $\frac{1}{2}$)	1700-2 638 (700-2)