


WAAS CH <b>86806</b> <b>W27A</b>	APP CRS <b>272°</b>	Rwy Idg TDZE <b>770</b> Apt Elev <b>770</b>	<b>6500</b>
--	------------------------	---	-------------

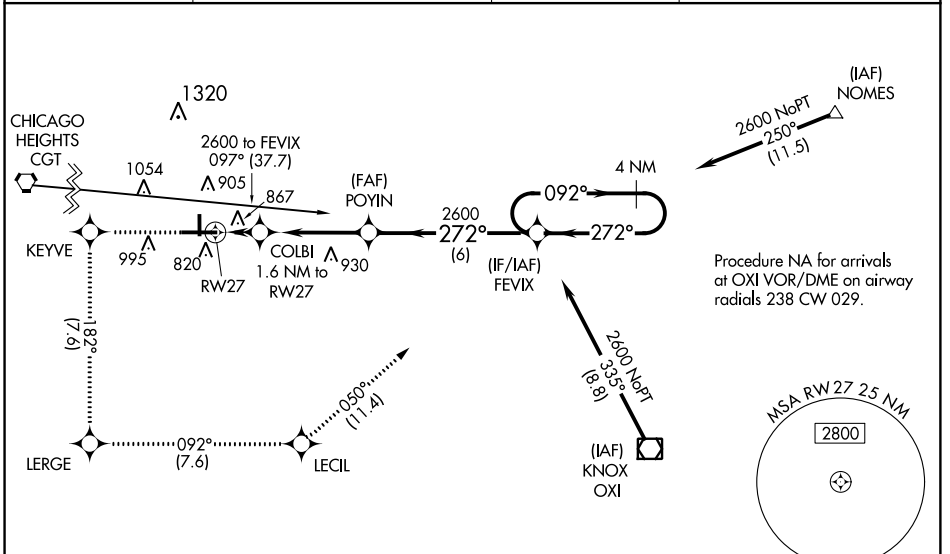
# RNAV (GPS) RWY 27

PORTER COUNTY RGNL (VPZ)

**⚠** Baro-VNAV NA when using Lansing Muni altimeter setting. For uncompensated Baro-VNAV systems, procedure NA below -16°C (4°F) or above 54°C (130°F).  
**⚠** DME/DME RNP-0.3 NA. When local altimeter setting not received, use Lansing Muni altimeter setting and increase all DA 77 feet and all MDA 80 feet, and increase LPV and LNAV/VNAV all Cats, and Circling Cat C visibility 1/4 mile. For inoperative MALSR, increase LNAV Cat D visibility to 1 1/4, when using Lansing Muni altimeter setting increase LPV all Cats visibility to 1 1/4.

**MALSR**  
  
**MISSED APPROACH:**  
 Climb to 2600 direct KEYVE and on track 182° to LERGE and on track 092° to LECIL and on track 050° to FEVIX and hold.

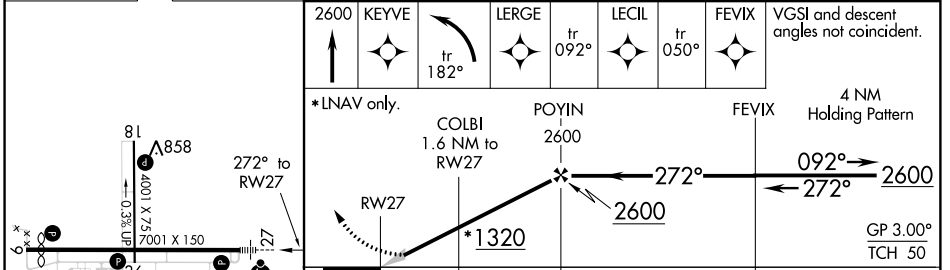
ASOS <b>125.875</b>	SOUTH BEND APP CON * <b>132.05 257.8</b>	CLNC DEL <b>120.525</b>	UNICOM <b>122.725 (CTAF)</b>
------------------------	---	----------------------------	---------------------------------



EC-2, 03 JAN 2019 to 31 JAN 2019

EC-2, 03 JAN 2019 to 31 JAN 2019

ELEV 770	<b>D</b>	TDZE 770
----------	----------	----------



CATEGORY	A	B	C	D
LPV DA		1020-1/2	250 (300-1/2)	
LNAV/VNAV DA		1201-1	431 (500-1)	
LNAV MDA	1180-1/2	410 (500-1/2)	1180-3/4 410 (500-3/4)	1180-1 410 (500-1)
CIRCLING	1260-1 490 (500-1)	1300-1 530 (600-1)	1300-1 1/2 530 (600-1 1/2)	1360-2 590 (600-2)