

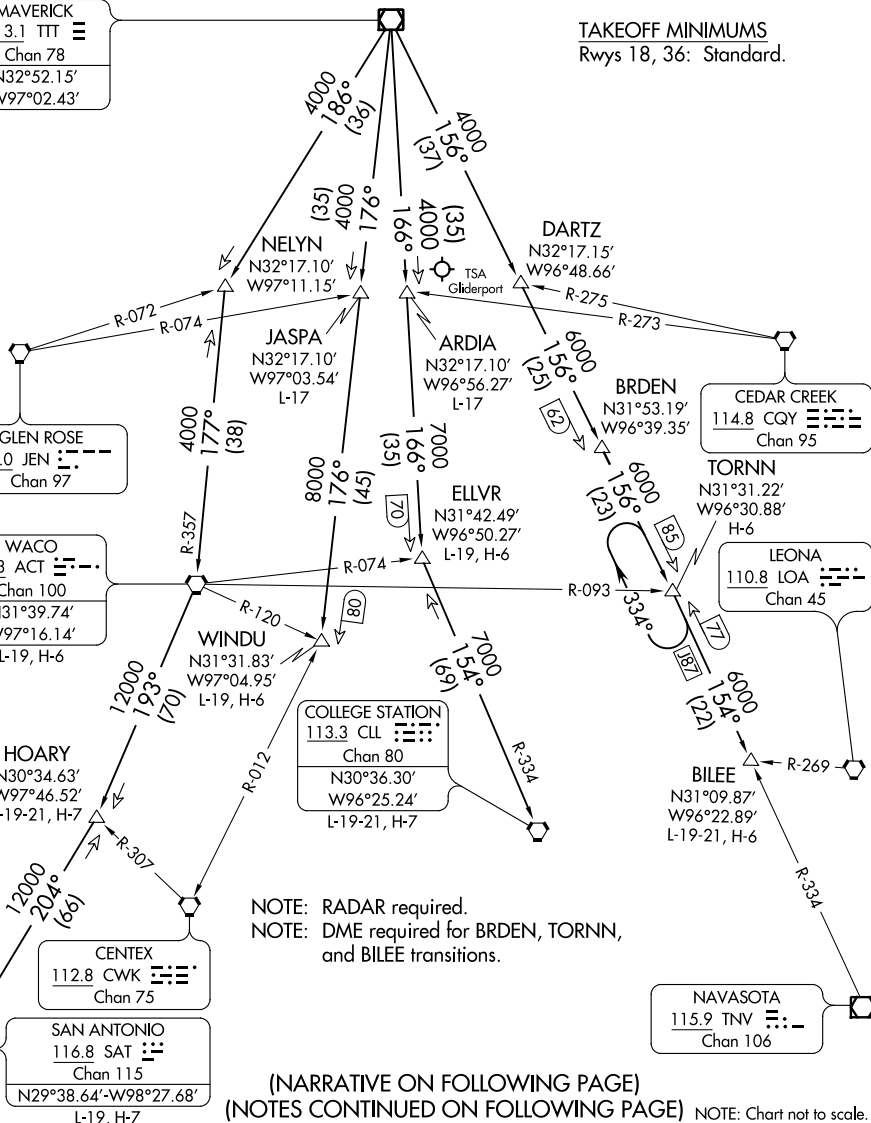
JOE POOL NINE DEPARTURE

**TOP ALTITUDE:
ASSIGNED BY ATC**

CLNC DEL
121.35
GND CON
121.875
MC KINNEY TOWER ★
118.825 (CTAF)
REGIONAL DEP CON
124.3 282.275

MAVERICK
113.1 TTT
Chan 78
N32°52.15'
W97°02.43'

TAKEOFF MINIMUMS
Rwys 18, 36: Standard.



NOTE: RADAR required.
NOTE: DME required for BRDEN, TORNN,
and BILEE transitions.

(NARRATIVE ON FOLLOWING PAGE)
(NOTES CONTINUED ON FOLLOWING PAGE) NOTE: Chart not to scale.

SC-2, 03 JAN 2019 to 31 JAN 2019

SC-2, 03 JAN 2019 to 31 JAN 2019