


WAAS CH <b>87102</b> W18A	APP CRS <b>179°</b>	Rwy Idg TDZE Apt Elev	<b>7002</b> <b>576</b> <b>589</b>
---------------------------------	------------------------	-----------------------------	-----------------------------------------

# RNAV (GPS) RWY 18

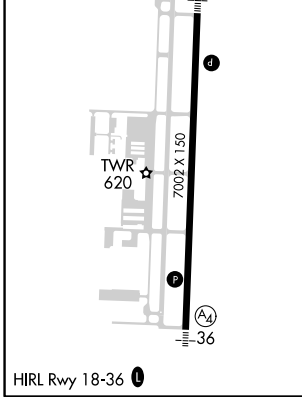
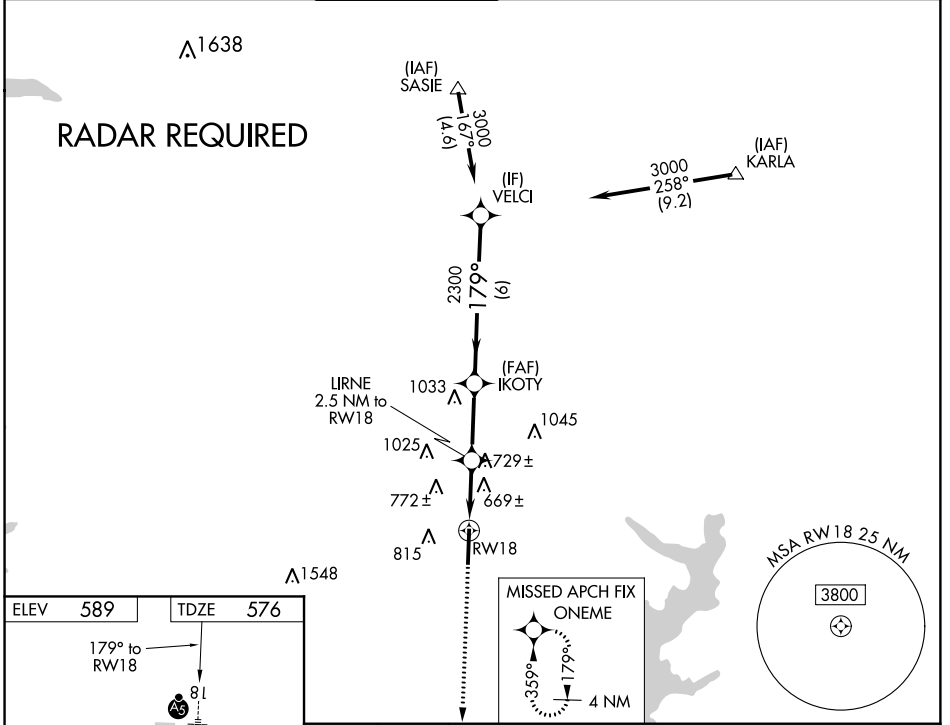
MCKINNEY NATIONAL (TKI)

**⚠** DME/DME RNP-0.3 NA. VDP NA with Dallas Love Field altimeter setting. When local altimeter setting not received, use Dallas Love Field altimeter setting and increase all DA 70 feet and all MDA 80 feet, increase LNAV Cats C and D 1/8 mile, and Circling Cats C and D visibility 1/2 mile. For inop MALS when using Dallas Love Field altimeter setting increase LPV all Cats visibility to 1 mile.

**MALS**  


**MISSED APPROACH:**  
Climb to 3000 direct ONEME and hold.

ASOS <b>119.925</b>	REGIONAL APP CON <b>124.3 282.275</b>	<b>MC KINNEY TOWER ★</b> <b>118.825</b> (CTAF) 	GND CON <b>121.875</b>	CLNC DEL★ (when ATCT closed) <b>121.35</b>	UNICOM <b>122.95</b>
------------------------	------------------------------------------	-------------------------------------------------------------------------------------------------------------------------------------	---------------------------	--------------------------------------------------	-------------------------



3000	ONEME $\diamond$	IKOTY 2300	VELCI 3000
*LNAV only		LIRNE 2.5 NM to RW18	
RW18		*0.9 NM to RW18	
*1420		2300	GP 3.00° TCH 50
0.9 NM		1.6 NM	2.8 NM
A		B	C
CATEGORY	A		D
LPV DA	776-1/2		200 (200-1/2)
LNAV MDA	920-1/2 344 (400-1/2)		920-5/8 344 (400-5/8)
CIRCLING	1120-1 531 (600-1)		1200-2 611 (700-2)

SC-2, 03 JAN 2019 to 31 JAN 2019

SC-2, 03 JAN 2019 to 31 JAN 2019