

APP CRS 338°	Rwy Idg TDZE Apt Elev	N/A N/A 1062
------------------------	-----------------------------	-----------------------------------------

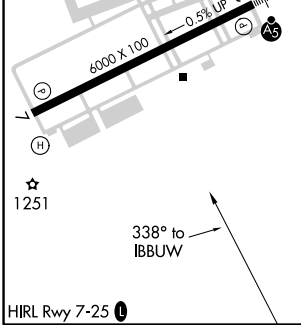
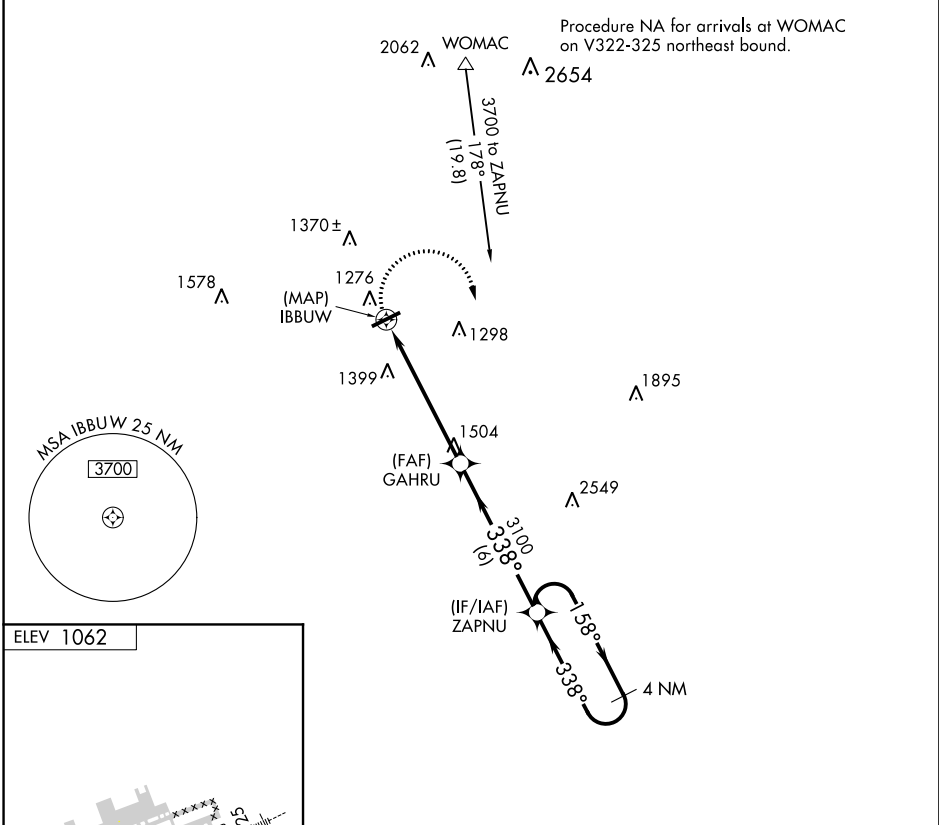
RNAV (GPS)-A

GWINNETT COUNTY-BRISCOE FIELD (LZU)

⚠ DME/DME RNP-0.3 NA. When local altimeter setting not received, use Winder altimeter setting and increase all MDAs 60 feet; increase Cat C and D visibility ¼ mile.

⚠ MISSED APPROACH: Climbing right turn to 3600 direct ZAPNU and hold.

ATIS 132.275	ATLANTA APP CON 126.975 239.275	GWINNETT TOWER ★ 124.1 (CTAF) 0	GND CON 121.8	CLNC DEL 121.8	ATLANTA CLNC DEL 134.0 (When tower closed)	UNICOM 123.05
------------------------	-------------------------------------------	---------------------------------------------------------	-------------------------	--------------------------	---------------------------------------------------------	-------------------------



3600	ZAPNU	4 NM Holding Pattern	
IBBUW		GAHRU	ZAPNU
5.8 NM		6 NM	3600
338°		158°	338°
CATEGORY	A	B	C
CIRCLING	1640-1	578 (600-1)	1640-1½ 578 (600-1½)
			1700-2 638 (700-2)

RNAV (GPS)-A

SE-4, 31 JAN 2019 to 28 FEB 2019

SE-4, 31 JAN 2019 to 28 FEB 2019