

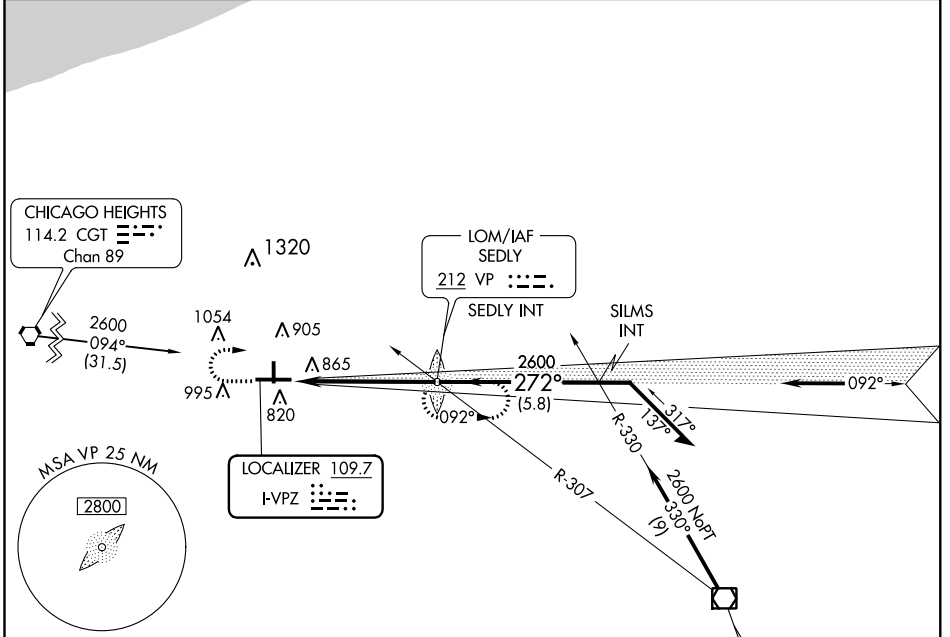
LOC I-VPZ <b>109.7</b>	APP CRS <b>272°</b>	Rwy Idg TDZE Apt Elev	<b>6500</b> <b>770</b> <b>771</b>
---------------------------	------------------------	-----------------------------	---

# ILS RWY 27

PORTER COUNTY RGNL (VPZ)

<b>▽</b> <b>▲</b>	MALSR 	MISSED APPROACH: Climb to 1400, then climbing right turn to 2600 direct SEDLY LOM and hold.
----------------------	-----------	---

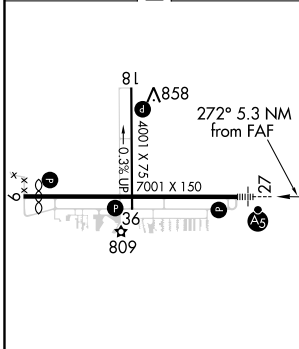
ASOS <b>125.875</b>	SOUTH BEND APP CON * <b>132.05 257.8</b>	CLNC DEL <b>120.525</b>	UNICOM <b>122.725 (CTAF)</b>
------------------------	---	----------------------------	---------------------------------



EC-2, 31 JAN 2019 to 28 FEB 2019

EC-2, 31 JAN 2019 to 28 FEB 2019

ELEV 771	<b>D</b>	TDZE 770
----------	----------	----------



HIRL Rwy 9-27

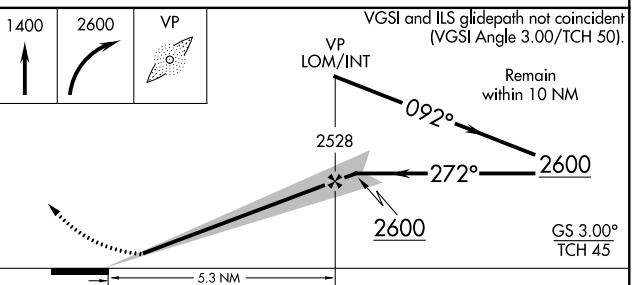
MIRL Rwy 18-36

REIL Rwys 9, 18 and 36

FAF to MAP 5.3 NM

Knots	60	90	120	150	180
Min:Sec	5:18	3:32	2:39	2:07	1:46

## ADF REQUIRED



CATEGORY	A	B	C	D
S-ILS 27		970-1/2 200 (200-1/2)		
S-LOC 27		1120-1/2 350 (400-1/2)		1120-3/4 350 (400-3/4)
CIRCLING	1260-1 489 (500-1)	1300-1 529 (600-1)	1300-1 1/2 529 (600-1 1/2)	1360-2 589 (600-2)