

APP CRS	Rwy Idg	4002
002°	TDZE	620
	Apt Elev	620

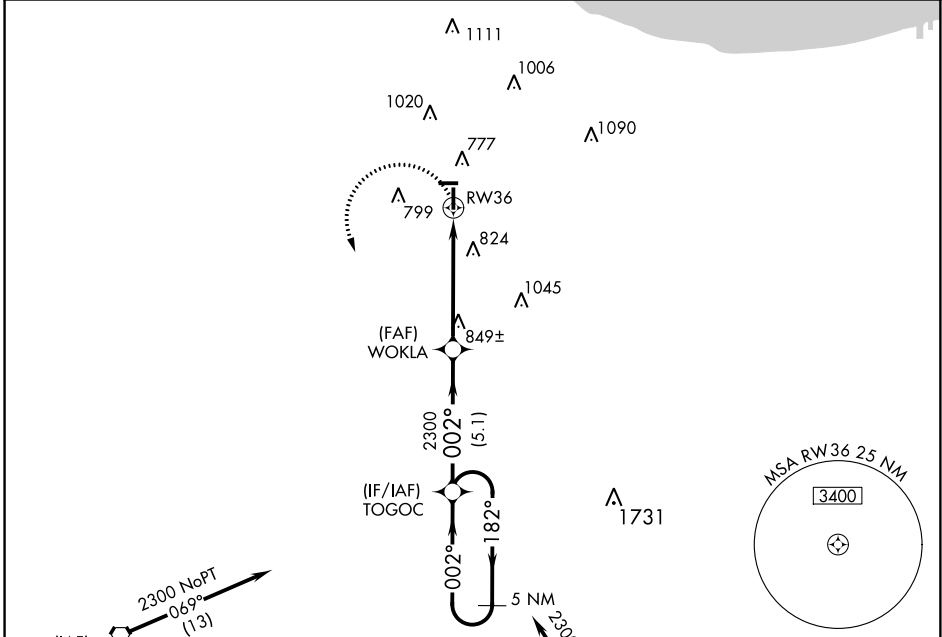
RNAV (GPS) RWY 36

LANSING MUNI (IGQ)

⚠ DME/DME RNP-0.3 NA. VDP NA when using Chicago Midway Intl altimeter setting. Circling Rwy 9 NA at night. When local altimeter setting not received, use Chicago Midway Intl altimeter setting and increase all MDAs 60 feet.

MISSED APPROACH:
Climbing left turn to 2300 direct TOGOC and hold.

AWOS-3 119.275	CHICAGO APP CON 128.2 285.6	UNICOM 122.7 (CTAF) 0
---------------------------------	----------------------------------------------	----------------------------------------



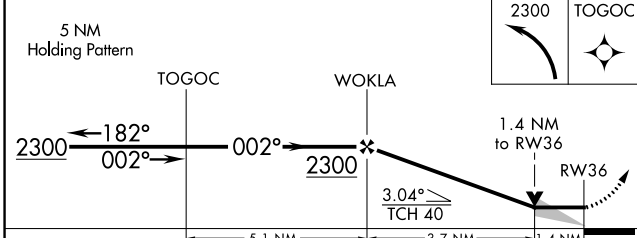
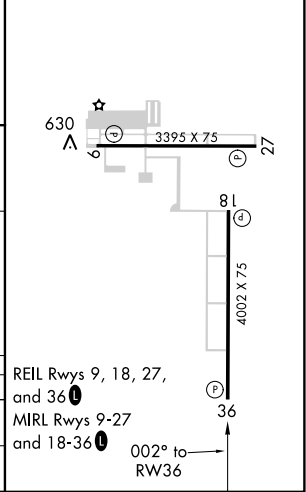
EC-3, 31 JAN 2019 to 28 FEB 2019

EC-3, 31 JAN 2019 to 28 FEB 2019

Procedure NA for arrival on EON VORTAC airway radials 096 CW 150.

Procedure NA for arrivals at LUCIT on V7-51-97 southeast bound and V38-156 eastbound.

ELEV 620	TDZE 620
----------	----------



CATEGORY	A	B	C	D
LNNAV MDA	1100-1	480 (500-1)		NA
CIRCLING	1140-1	520 (600-1)		NA

REIL Rwy 9, 18, 27, and 36
MIRL Rwy 9-27 and 18-36
002° to RWY 36