

APP CRS	Rwy Idg	<b>3395</b>
<b>092°</b>	TDZE	<b>617</b>
	Apt Elev	<b>620</b>

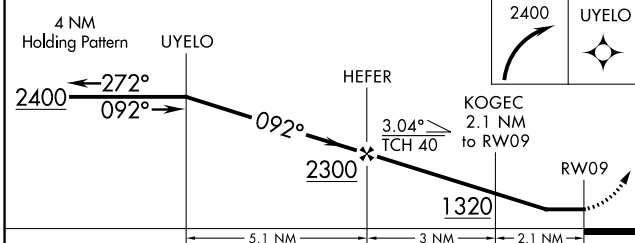
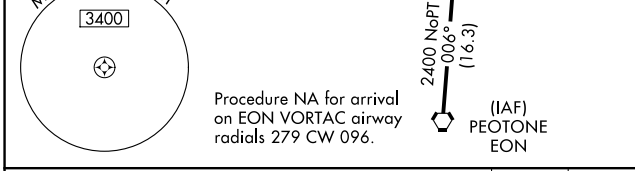
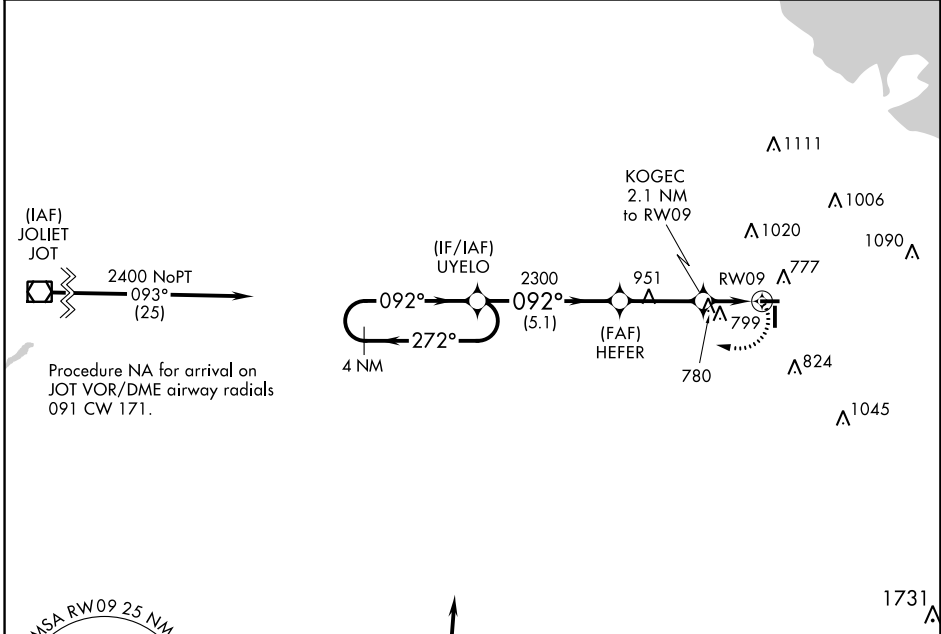
# RNAV (GPS) RWY 9

LANSING MUNI (IGQ)

**⚠** Rwy 9 Straight-in and Circling minimums NA at night.  
 Rwy 9 helicopter visibility reduction below 1 SM NA.  
 DME/DME RNP-0.3 NA.

MISSED APPROACH: Climbing right turn to 2400 direct UYELO and hold.

AWOS-3 <b>119.275</b>	CHICAGO APP CON <b>128.2 285.6</b>	UNICOM <b>122.7 (CTAF)</b>
--------------------------	---------------------------------------	-------------------------------



ELEV 620	TDZE 617
----------	----------

092° to RWY 09  
 630 A

3395 X 75  
 27  
 81  
 4002 X 75  
 36

REIL Rwy 9, 18, 27, and 36  
 MIRL Rwy 9-27 and 18-36

CATEGORY	A	B	C	D
RNAV MDA	1080-1	463 (500-1)		NA
CIRCLING	1140-1	520 (600-1)		NA

EC-3, 31 JAN 2019 to 28 FEB 2019

EC-3, 31 JAN 2019 to 28 FEB 2019