


LOC/DME I-EFE 109.35 Chan 30 (Y)	APP CRS 179°	Rwy Idg TDZE Apt Elev	7002 576 589
--	------------------------	-----------------------------	---

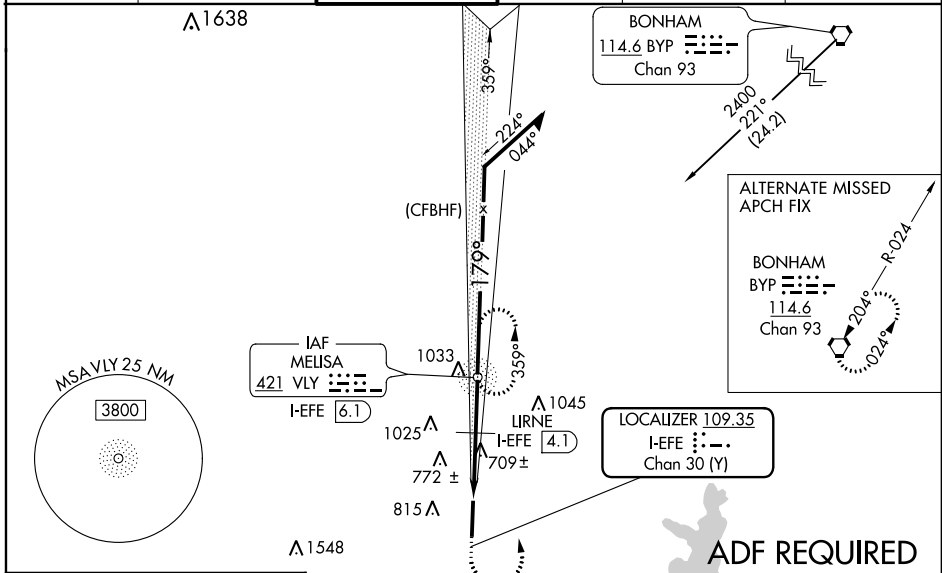
ILS or LOC RWY 18

MCKINNEY NATIONAL (TKI)

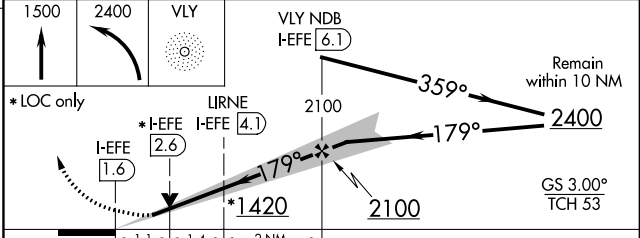
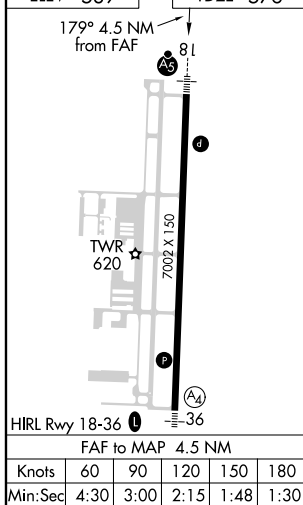
⚠ When local altimeter setting not received, use Dallas Love Field altimeter setting and increase all DA 70 feet and all MDA 80 feet, increase S-LOC 18 Cat A visibility ¼ mile, **⚠** Cats C/D visibility ½ mile and Circling Cat C/D visibility ¼ mile. When using URNE Fix Minimums increase S-LOC 18 Cats C/D visibility ¾ mile, and increase Circling Cats C/D visibility ¼ mile. For inop MALSAR increase S-LOC 18 Cats C/D visibility to 2½ mile. For inop MALSAR when using Dallas Love Field altimeter setting, increase S-ILS 18 all Cats visibility to ¾ mile, and when using URNE Fix Minimums increase S-LOC 18 Cats C/D to 1¾ mile. VDP NA when using Dallas Love Field altimeter setting, ADF Required.

MALSAR

MISSED APPROACH:
Climb to 1500 then climbing left turn to 2400 direct VLY NDB and hold.

ASOS 119.925	REGIONAL APP CON 124.3 282.275	MC KINNEY TOWER ★ 118.825 (CTAF) 0	GND CON 121.875	CLNC DEL★ (when ATCT closed) 121.35	UNICOM 122.95
------------------------	--	---	---------------------------	--	-------------------------



ELEV 589	TDZE 576
----------	----------



CATEGORY	A	B	C	D
S-ILS 18		776-½	200 (200-½)	
S-LOC 18	1420-½ 844 (900-½)	1420-¾ 844 (900-¾)	1420-1⅞	844 (900-1⅞)
C CIRCLING	1420-1¼	831 (900-1¼)	1420-2½ 831 (900-2½)	1420-2¾ 831 (900-2¾)
URNE FIX MINIMUMS				
S-LOC 18	960-½	384 (400-½)	960-⅝	384 (400-⅝)
C CIRCLING	1040-1 451 (500-1)	1120-1 531 (600-1)	1200-1¾ 611 (700-1¾)	1380-2½ 791 (800-2½)