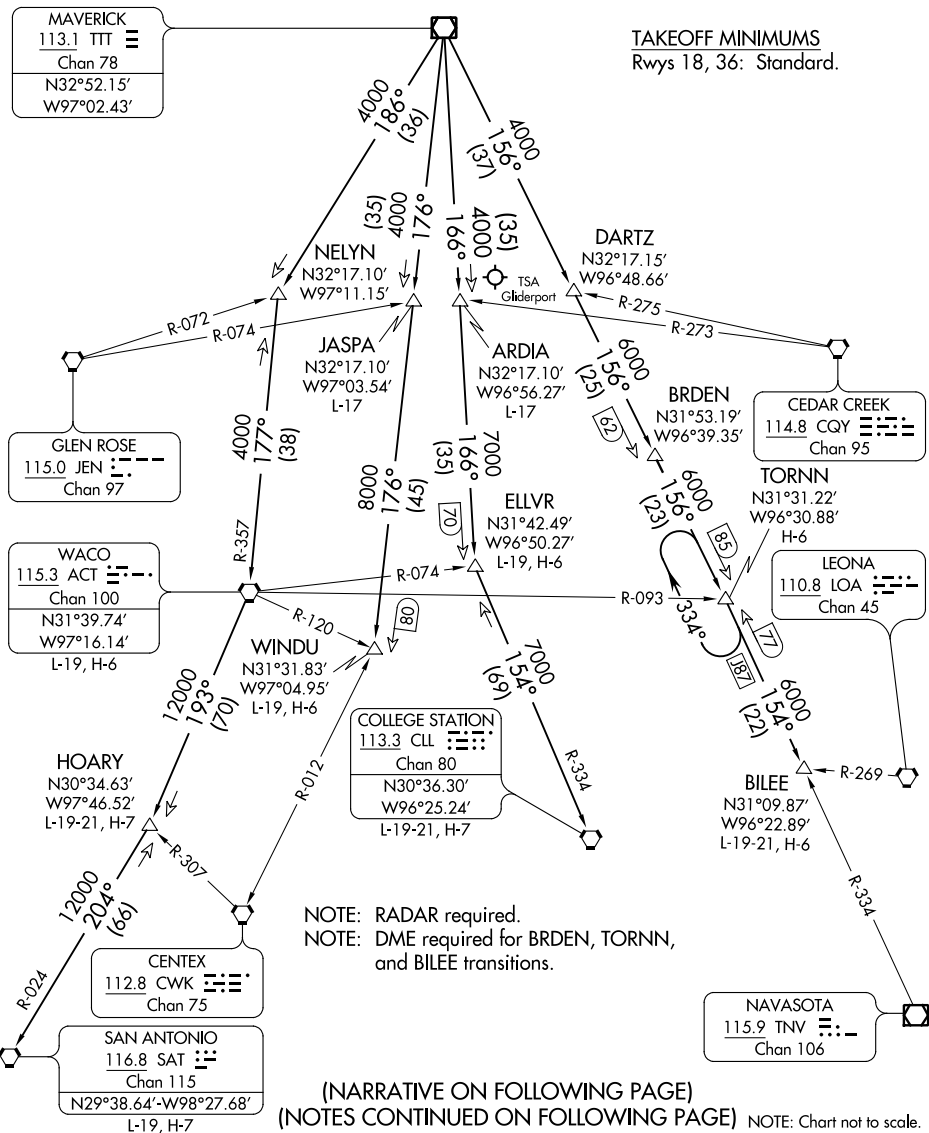


JOE POOL NINE DEPARTURE

**TOP ALTITUDE:
ASSIGNED BY ATC**

CLNC DEL
121.35
GND CON
121.875
MC KINNEY TOWER ★
118.825 (CTAF)
REGIONAL DEP CON
124.3 282.275

TAKEOFF MINIMUMS
Rwys 18, 36: Standard.



SC-2, 31 JAN 2019 to 28 FEB 2019

SC-2, 31 JAN 2019 to 28 FEB 2019