

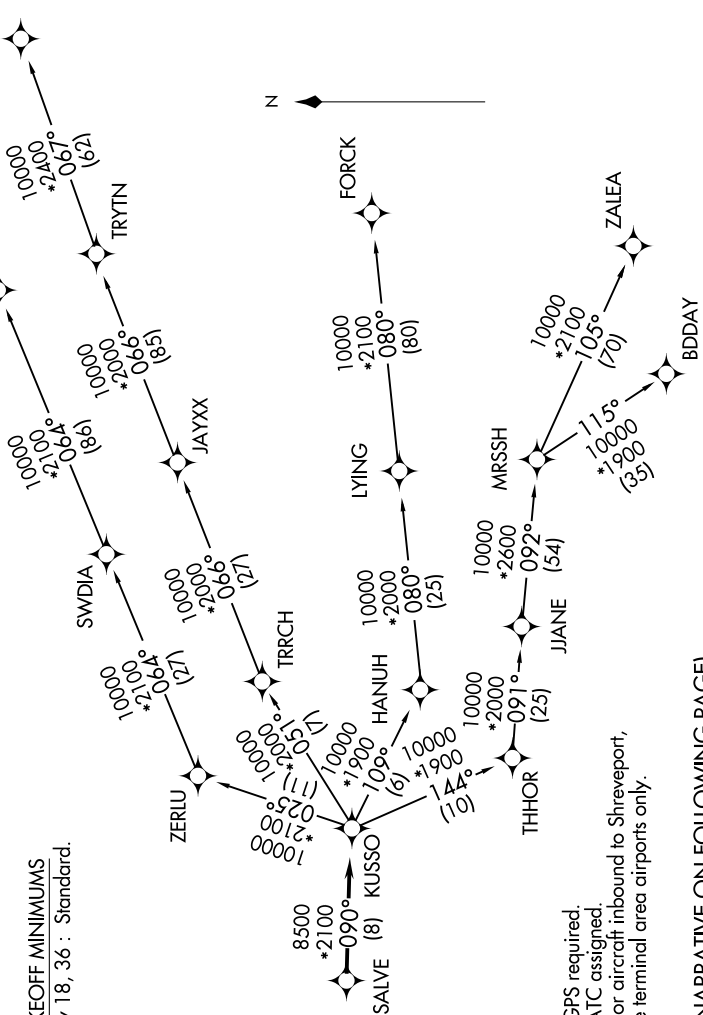
# KUSSO FIVE DEPARTURE (RNAV)

SC-2, 31 JAN 2019 to 28 FEB 2019

**TOP ALTITUDE:  
ASSIGNED BY ATC**

CLNC DEL\*  
when ATCT closed  
121.35  
GND CON  
121.875  
MC KINNEY TOWER\*  
118.825 (CTAF)  
REGIONAL DEP CON  
124.3 282.275

TAKEOFF MINIMUMS  
Rwy 18, 36 : Standard.



NOTE: RADAR required.  
NOTE: RNAV 1.  
NOTE: DME/DME/IRU or GPS required.  
NOTE: BDDAY transition: ATC assigned.  
NOTE: MRSSH transition: For aircraft inbound to Shreveport, Jackson and Monroe terminal area airports only.

(NARRATIVE ON FOLLOWING PAGE)

NOTE: Chart not to scale.

SC-2, 31 JAN 2019 to 28 FEB 2019