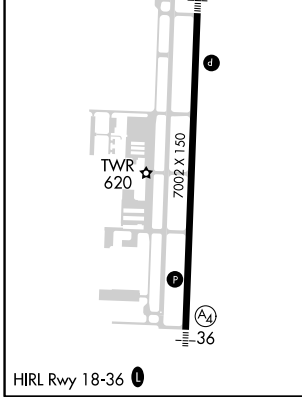
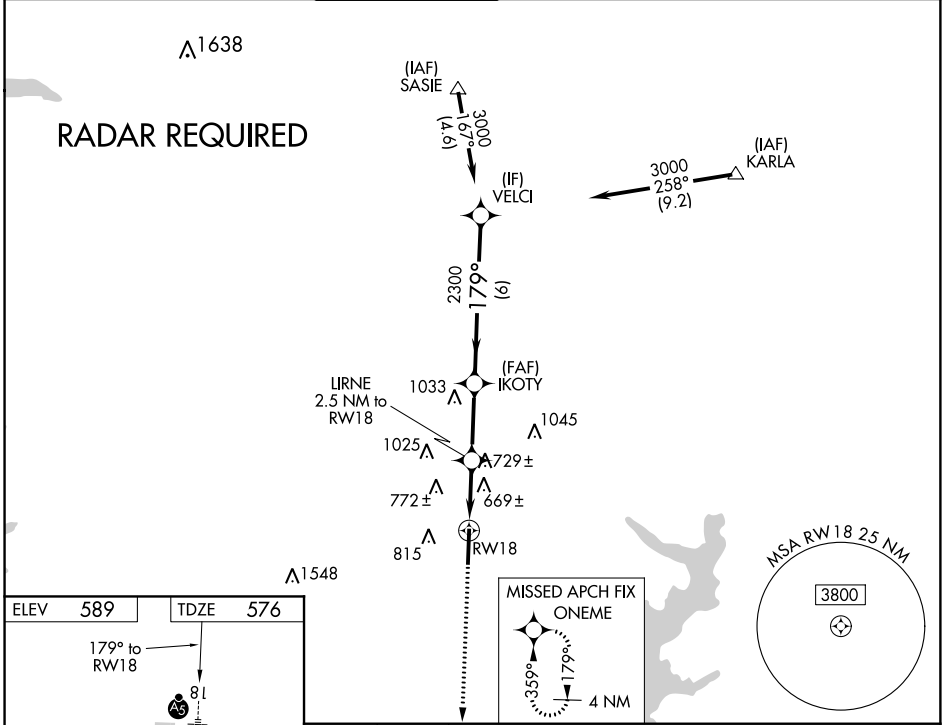


WAAS CH 87102 W18A	APP CRS 179°	Rwy Idg TDZE Apt Elev	7002 576 589
---------------------------------	------------------------	-----------------------------	---

RNAV (GPS) RWY 18

MCKINNEY NATIONAL (TKI)

<p>⚠ DME/DME RNP-0.3 NA. VDP NA with Dallas Love Field altimeter setting. When local altimeter setting not received, use Dallas Love Field altimeter setting and increase all DA 70 feet and all MDA 80 feet, increase LNAV Cats C and D 1/8 mile, and Circling Cats C and D visibility 1/2 mile. For inop MALS when using Dallas Love Field altimeter setting increase LPV all Cats visibility to 1 mile.</p>	<p>MALS</p>		<p>MISSED APPROACH: Climb to 3000 direct ONEME and hold.</p>		
	ASOS 119.925	REGIONAL APP CON 124.3 282.275	MC KINNEY TOWER ★ 118.825 (CTAF)	GND CON 121.875	CLNC DEL★ (when ATCT closed) 121.35



3000	ONEME	VELCI	3000	
*LIRNE only	LIRNE 2.5 NM to RW18	IKOTY	2300	
	*0.9 NM to RW18		2300	
			1420	
0.9 NM	1.6 NM	2.8 NM	6 NM	
CATEGORY	A	B	C	D
LPV DA	776-1/2		200 (200-1/2)	
LNAV MDA	920-1/2 344 (400-1/2)		920-5/8 344 (400-5/8)	
CIRCLING	1120-1 531 (600-1)		1120-1 1/2 531 (600-1 1/2) 1200-2 611 (700-2)	

GP 3.00° TCH 50

SC-2, 31 JAN 2019 to 28 FEB 2019

SC-2, 31 JAN 2019 to 28 FEB 2019