

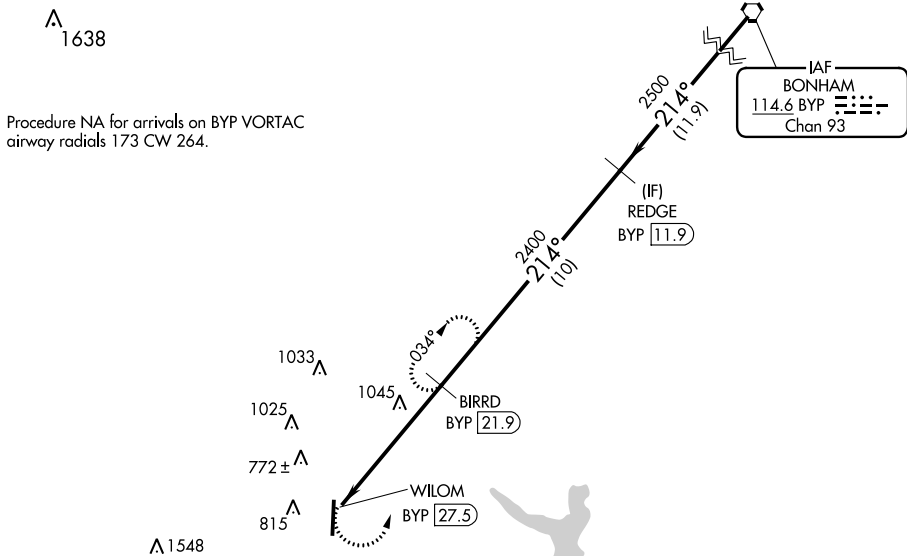
VORTAC BYP 114.6 Chan 93	APP CRS 214°	Rwy Idg TDZE Apt Elev 589	N/A N/A 589
--	------------------------	---	--

VOR/DME-A
MCKINNEY NATIONAL (TKI)

When local altimeter setting not received use Dallas Love Field altimeter setting and increase all MDA 80 feet and Cats C and D visibility 1/4 mile.

MISSED APPROACH: Climbing left turn to 2400 on BYP VORTAC R-214 to BIRRD/BYP 21.9 DME and hold.

ASOS 119.925	REGIONAL APP CON 124.3 282.275	MCKINNEY TOWER ★ 118.825 (CTAF) 0	GND CON 121.875	CLNC DEL★ (when ATCT closed) 121.35	UNICOM 122.95
------------------------	--	--	---------------------------	--	-------------------------



SC-2, 31 JAN 2019 to 28 FEB 2019

SC-2, 31 JAN 2019 to 28 FEB 2019

