

RICKENBACKER INTL (LCK)(KLCK) P (ANG ARNG) 10 S UTC-5(-4DT) N39°48.83' W82°55.67'

CINCINNATI

744 B TPA—See Remarks LRA ARFF Index—See Remarks NOTAM FILE LCK

H-10G, L-29A

RWY 05R-23L: H12102X200 (ASPH-CONC-GRVD) S-75, D-210,

2S-175, 2D-380, 2D/2D2-850 PCN 9/2 R/C/W/T HIRL CL

RWY 05R: ALSF2. TDZL. PAPI(P4L)—GA 3.0° TCH 69'. RVR-T

RWY 23L: MALSR. PAPI(P4L)—GA 3.0° TCH 78'. RVR-T

RWY 05L-23R: H11902X150 (ASPH-GRVD) S-75, D-190, 2S-175,

2D-320, 2D/2D2-825 PCN 69 F/B/W/T HIRL

RWY 05L: MALSR. PAPI(P4L)—GA 3.0° TCH 70'. Thld dsplcd 898'.

RWY 23R: REIL. PAPI(P4L)—GA 3.0° TCH 79'. Thld dsplcd 989'.

RUNWAY DECLARED DISTANCE INFORMATION

RWY 05L:TORA-11902 TODA-11902 ASDA-11902 LDA-11004

RWY 05R:TORA-12102 TODA-12102 ASDA-12102 LDA-12102

RWY 23L:TORA-12102 TODA-12102 ASDA-12102 LDA-12102

RWY 23R:TORA-11902 TODA-11902 ASDA-11902 LDA-10913

SERVICE: S4 FUEL 100LL, JET A LGT Bdry lgt avbl. **MILITARY—JASU**

2(A/M32A-86) (MA-1A) 3(AM32-95) FUEL J8(Mil), A, A+ (avbl

1000-0600Z‡ Mon-Fri; 1100-0300Z‡ Sat-Sun; C614-409-3660.

Call out fee \$75) (NC-100LL) FLUID SP PRESAIR LHOX OIL O-148

TRAN ALERT svc avbl but no PPR rqr. No ANG tran svc off ANG ramp.

AIRPORT REMARKS: Attended continuously. Call 614-409-3660; emergency

call arpt ops at 614-374-1869. Birds on and invof arpt. Acft wingspan greater than 171' rstd to 15 mph on all twys. Twy M clsd indef. Noise abatement procedures in effect from 0400-1200Z‡, dep Rwy 23L and 23R winds 10 knots or less; arrival Rwy 05L and 05R winds 10 knots or less; arpt ops 614-374-1869. Class I, ARFF Index B. Index E ARFF equip avbl 24 hrs, ctc arpt ops 614-492-2436. TPA for lgt acft weighing 12,500 lbs or less 1400(656), TPA for acft greater than 12,500 lbs 1900(1156), TPA for overhead tgc 2400(1656). To req ldg rights ctc US Customs between 1230-0300Z‡ Mon-Fri at 614-497-1865. Lndg fee.

MILITARY REMARKS: See FLIP AP/1 Supplementary Arprt Remarks. **RSTD** AMC acft opr restricted during Bird Watch Conditions

Moderate (tkf and ldg permission only when departure/arrival routes avoid identification bird activity, no local IFR/VFR t/c pattern) and Severe (tkf and ldg prohibited without OG/CC approval) ctc Comd Post for current Bird Watch Conditions code. All military acft must RON on 121 ARW or Detachment-21 ramp when space is avbl. All fixed wing military acft

requiring parking and/or svc on 121 ARW ramp must have PPR number 48 hr in advance from Base OPS DSN 696-4595, C614-492-4595. Base OPS hr vary. Clsd holidays. **CAUTION** Bird and deer hazard. **CSTMS/AG/IMG** Avbl only with prior coordination. **ANG** 121 ARW KC-135-R Comd Post DSN 696-4468. Limited tran svc avbl, weekdays 1200-2000Z‡

except holidays. Limited tran fuel/parking, tran aircrew must assist/perform refuel opr. Fuel avbl on ANG ramp on prior request only. Acft support not coordinated by PPR 48 hr prior with 121 ARW may not be avbl. **ARNG** Opr weekdays 1200-2100Z‡ except holidays. No tran svc after 1900Z‡, DSN 346-6411, C614-336-6411. Ctc C-26 OPS prior to entering C-26 ramp park area, 139.3 DSN 346-6473, C614-336-6473.

AIRPORT MANAGER: 614-409-3636

WEATHER DATA SOURCES: AWOS-3 (614) 492-2441

COMMUNICATIONS: ATIS 132.75 UNICOM 122.95

® COLUMBUS APP/DEP CON 134.0 279.6

RICKENBACKER TOWER 120.05 348.4 **GND CON** 125.275 275.8

CLNC DEL 125.275 275.8

ANG COMD POST 238.8 (Call RICK CON) **ARNG OPS** 123.09 142.6 228.8 36.7 **ARNG C-26 OPS** 139.3 (Call TORSO OPS)

ARW OPS 238.8 (Call BRUTUS OPS)

AIRSPACE: CLASS D.

RADIO AIDS TO NAVIGATION: NOTAM FILE DAY.

APPLETON (H) VORTAC 116.7 APE Chan 114 N40°09.06' W82°35.30' 224° 25.6 NM to fld. 1354/6W.

HIWAS.

TACAN AZM/DME unusable:

183°-188° byd 20 NM blo 3,000'

COBBS NDB (LOMW) 253 DD N39°44.58' W83°01.22' 052° 6.0 NM to fld. 705/7W. NOTAM FILE LCK.

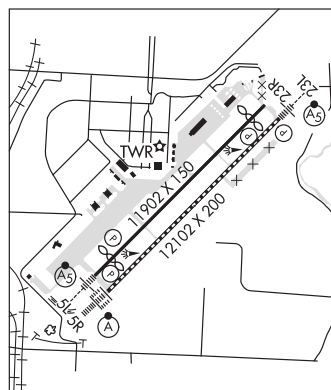
PICKL NDB (LOMW) 376 LC N39°52.86' W82°50.16' 233° 5.9 NM to fld. 764/7W. NOTAM FILE LCK.

ILS/DME 110.55 I-FQS Chan 42(Y) Rwy 05L. Class IE.

ILS/DME 110.1 I-DDV Chan 38 Rwy 05R. Class IIE. LOM COBBS NDB.

ILS 110.1 I-LCK Rwy 23L. Class IE. LOM PICKL NDB. Coupled apch unusable blo 900'.

COMM/NAV/WEATHER REMARKS: Ctc ground control for clearance prior to push back on cargo ramp 2.



CONCORD AIRPARK (See PAINESVILLE on page 286)