

APPLETON INTL (ATW)(KATW) 3 W UTC-6(-5DT) N44°15.49' W88°31.15'GREEN BAY
H-2K, L-28H
IAP, AD

918 B LRA Class I, ARFF Index B NOTAM FILE ATW

RWY 03-21: H8002X150 (CONC-GRVD) S-75, D-160, 2S-175,
2D-320 PCN 69 R/B/X/T HIRL**RWY 03:** MALSR. PAPI(P4L)—GA 3.0° TCH 47'. RVR-T Tree.**RWY 21:** REIL. PAPI(P4L)—GA 3.0° TCH 47'. RVR-R Tree.**RWY 12-30:** H6501X150 (CONC-GRVD) S-75, D-160, 2S-175,
2D-320 PCN 60 R/B/X/T HIRL 0.9% up NW**RWY 12:** REIL. PAPI(P4L)—GA 3.0° TCH 35'. Tree.**RWY 30:** MALSR. PAPI(P4L)—GA 3.0° TCH 61'.**LAND AND HOLD—SHORT OPERATIONS**

LDG RWY	HOLD—SHORT POINT	AVBL LDG DIST
RWY 03	12-30	3300
RWY 21	12-30	4100
RWY 30	03-21	3400

RUNWAY DECLARED DISTANCE INFORMATION**RWY 03:** TORA-8002 TODA-8002 ASDA-8002 LDA-8002**RWY 12:** TORA-6501 TODA-6501 ASDA-6501 LDA-6501**RWY 21:** TORA-8002 TODA-8002 ASDA-8002 LDA-8002**RWY 30:** TORA-6501 TODA-6501 ASDA-6501 LDA-6501**SERVICE:** S4 FUEL 100LL, JET A OX 1, 2 LGT When twr clsd HIRL

Rwy 03-21 preset on low ints, to increase ints and ACTIVATE MALSR

Rwy 03 and Rwy 30; REIL Rwy 12 and Rwy 21; PAPI Rwy 12, HIRL Rwy 03-21 and Rwy 12-30—CTAF. PAPI Rwy 03, Rwy 21 and Rwy 30 opr continuously. Rwy 21 PAPI rst d byd 8.5° right of course.

AIRPORT REMARKS: Attended continuously. Birds and migratory waterfowl on and in/ovf arpt. Snow removal ops in progress winter months. Vehicle operators will be monitoring CTAF; acct ldg/dep Appleton should use CTAF when twr clsd. US CSTMS and border protection, PPR US CSTMS svc Mon-Fri 1300-2100Z (0800-1600 local) call 920-968-2348.**AIRPORT MANAGER:** 920-832-5267**WEATHER DATA SOURCES:** AWOS-3 (920) 832-2597 LAWRS.**COMMUNICATIONS:** CTAF 119.6 ATIS 127.15 UNICOM 122.95

Ⓡ GREEN BAY APP/DEP CON 126.3 (1130-0530Z‡)

Ⓡ MINNEAPOLIS CENTER APP/DEP CON 126.3 (0530-1130Z‡)

APPLETON TOWER 119.6 (1130-0500Z‡) GND CON 121.7

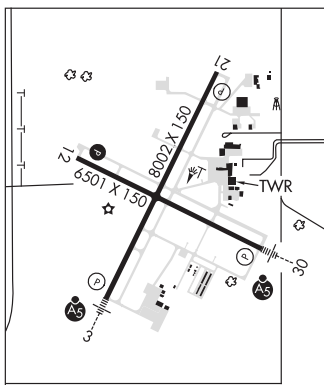
AIRSPACE: CLASS D svc 1130-0500Z‡; other times CLASS G.**RADIO AIDS TO NAVIGATION:** NOTAM FILE OSH.**OSHKOSH (L) VORTAC** 111.8 OSH Chan 55 N43°59.43' W88°33.36' 004° 16.1 NM to fld. 781/2E.

VORTAC unusable:

196°-234° byd 37 NM blo 2,400'

TACAN AZIMUTH unusable:

166°-174° byd 10 NM

KOOKY NDB (LOMW) 407 AQ N44°12.95' W88°23.94' 298° 5.8 NM to fld. 754/2W. NOTAM FILE ATW. NDB unmonitored.**ILS/DME** 109.1 I-ATW Chan 28 Rwy 03. Class 1C. ILS/unmonitored when ATCT clsd. LOC unusable byd 20° right of course. DME unusable byd 25° right of course.**ILS/DME** 109.7 I-AQZ Chan 34 Rwy 30. Class 1T. LOM KOOKY NDB. ILS/DME unmonitored.**ARBOR VITAE** N45°55.61' W89°43.71' NOTAM FILE ARV.
NDB (MHW) 221 ARV at Lakeland/Noble F Lee Mem Fld. 1625/2W.GREEN BAY
L-14J**ARSHA** N45°37.69' W89°37.13' NOTAM FILE RHI.
NDB (LOMW) 272 RH 091° 6.4 NM to Rhinelander-Oneida Co. 1561/3W.

GREEN BAY