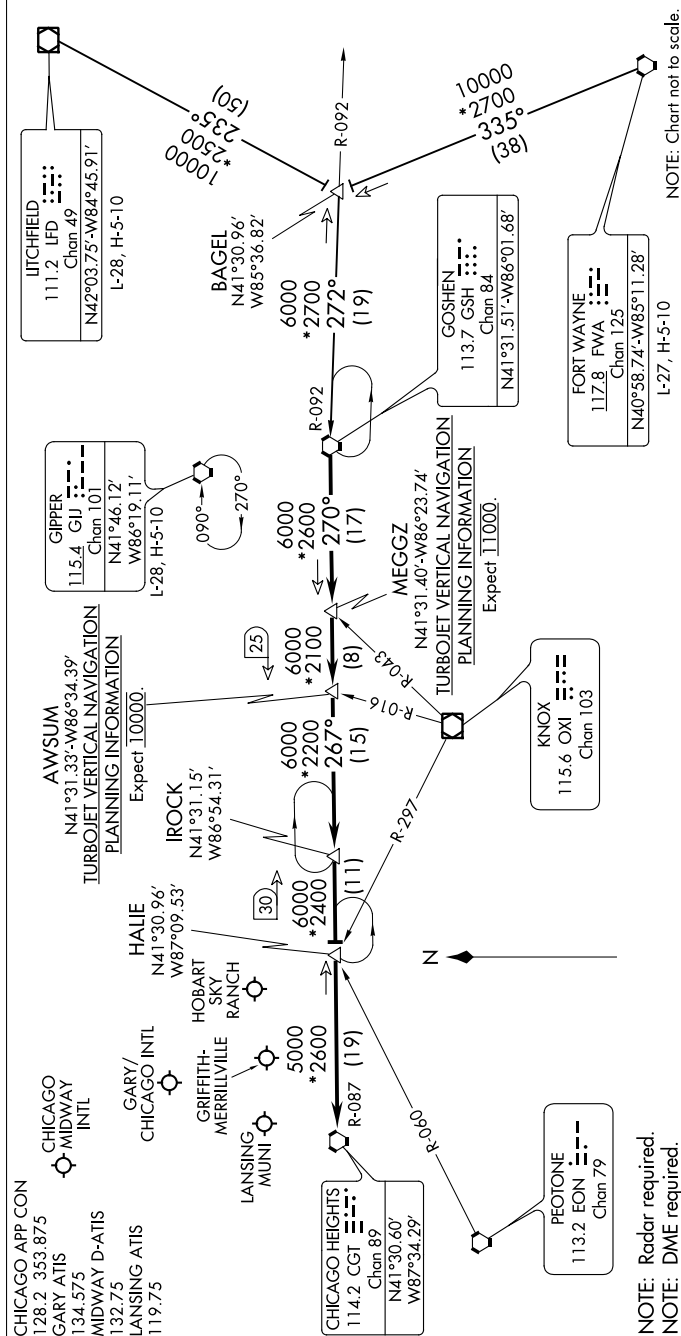


# GOSHEN SEVEN ARRIVAL

EC-3, 28 FEB 2019 to 28 MAR 2019



NOTE: Chart not to scale.

## ARRIVAL ROUTE DESCRIPTION

**FORT WAYNE TRANSITION (FWA.GSH7):** From over FWA VORTAC on FWA R-335 to BAGEL then on GSH R-092 to GSH VORTAC. Thence...

**IITCHFIELD TRANSITION (LFD.GSH7):** From over LFD VOR/DME on LFD R-235 to BAGEL then on GSH R-092 to GSH VORTAC. Thence...

...From over GSH VORTAC on GSH R-270 to MEGGZ, then on GSH R-270 to AWSUM, then on GSH R-270 and CGT R-087 to IROCK, then on CGT R-087 to HALIE INT, then on CGT R-087 to CGT VORTAC. Expect radar vectors to final approach course.

EC-3, 28 FEB 2019 to 28 MAR 2019

# GOSHEN SEVEN ARRIVAL